



**BICYCLE
NETWORK**
We've got your back

SUPER TUESDAY BIKE COUNT

Tennant Creek

MARCH 2021



SUPER COUNTS

About the count

About the count

The Super Tuesday Bike Count (Super Tuesday) collects reliable annual figures of bicycle commuters and their movements on roads and paths.

Since 2007, Bicycle Network has conducted bicycle counts at key intersections and corridors that were selected by local governments.

This information is accurate, relevant, up-to-date, and provides a longitudinal reflection of cycling activity and trends. The data is a critical tool for councils and other agencies responsible for providing bicycle riding facilities for their constituents.

Aims and purposes

Super Tuesday is designed to complement the surveys that individual councils and other agencies run on a regular or occasional basis.

The project aims to answer some critical questions:

- How many riders are there?
- Which routes are riders using?
- What is the year-on-year growth?
- How many women are riding?
- When is the busiest hour?

Methodology

The Super Tuesday counters collect data from intersections along popular commuter routes, as well as subsidiary routes with lower rider volumes.

Bicycle Network coordinates the count at locations nominated by traffic engineers, transport planners, and other transport officers from participating councils.

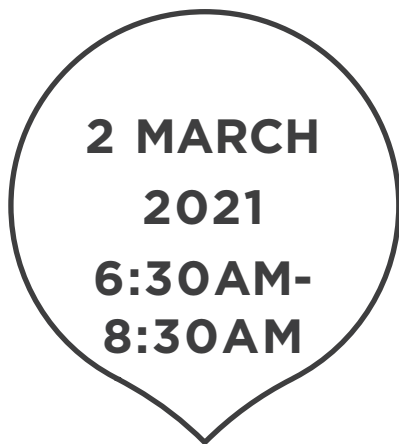
The counts were conducted by volunteer counters who record all movements, gender of riders and their observations in fifteen minute time intervals on standardised count sheets.

Following the completion of the visual count, counters send their data to Bicycle Network by one or more of the following means:

- Online: by entering the data directly via the web link
- Email: by sending completed electronic tally sheet attached
- Mail: by posting hard copy to the Bicycle Network office

The submitted data are validated, analysed and visualised by Bicycle Network, and subsequently compiled into reports for participating councils and other agencies.

Count Summary in Tennant Creek



COUNT IN 2021

The Super Tuesday Bike Count was conducted on Tuesday 2 March 2021 for two hours from 6:30am to 8:30am.

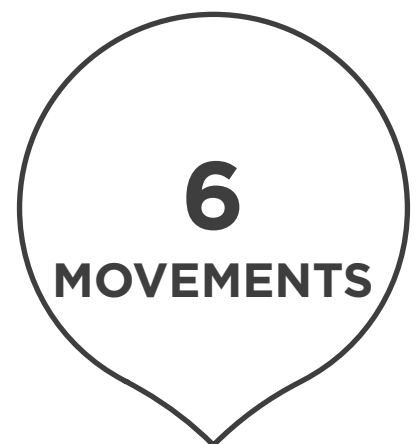
It was sunny in Tennant Creek on the day of the count, with ESE winds reaching 41km/h, and a maximum temperature of 32.4 degrees at 9am.

By participating in the count, volunteer counters can choose a local community group to receive a donation of \$60. In Tennant Creek a total of \$60 went back to the local community through donations to nominated groups.



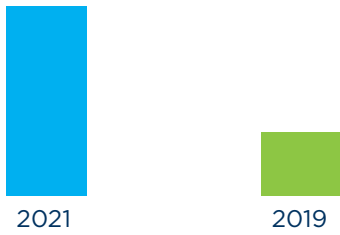
COUNT SITES

A single site is annually surveyed in Tennant Creek.



TRAFFIC FLOW

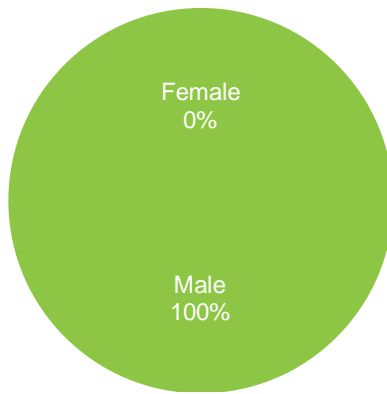
A total of 6 movements was counted at all selected intersections across the council area during the two-hour survey.



20%

GROWTH

Overall, usage has increased by 20% (6 movements) compared to the same 1 sites surveyed in Super Tuesday, September 2019 (5 movements). New sites were excluded from this comparison.



GENDER RATIO

No females were riding bikes across the municipality.

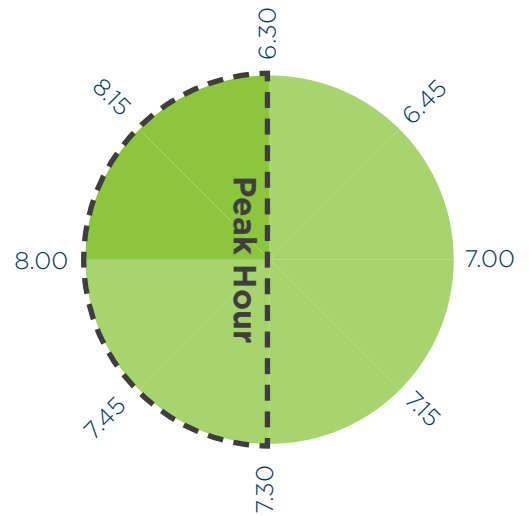
The average female ridership across Northern Territory is 35%, higher than the Australia-wide average of surveyed areas in 2021 (25%).

COUNT RESULTS

p. 8

The summary data table and analysis on each site are included in this chapter.

Data table in Excel spreadsheet is supplied with this report.



PEAK HOUR

The busiest hour was between 7:30 - 8:30am during the survey.

The average volume in 15 minute time intervals is as follows.

- 6:30-6:45am: 1 movement
- 6:45-7:00am: 1 movement
- 7:00-7:15am: 0 movements
- 7:15-7:30am: 0 movements
- 7:30-7:45am: 1 movement
- 7:45-8:00am: 2 movements
- 8:00-8:15am: 0 movements
- 8:15-8:30am: 1 movement

Super Tuesday in 2021

THE COUNT

Bicycle Network's Super Tuesday Bike Count is the world's biggest and longest running visual bike count, where volunteers measure bicycle commuter flows in the morning peak from 7:00am to 9:00am (6:30am - 8:30am in the NT) across the country. The count provides quantitative surveys with figures on the movements of bike users, helping councils provide and improve infrastructure and facilities for people riding bikes.

This year, the Super Tuesday Bike Count was conducted on Tuesday 2 March between 6:30am and 8:30am. Where necessary, a recount was conducted on Tuesday 23 March.

In the 2021 count, 725 sites were surveyed across 36 councils. Our counters recorded over 90K movements across Australia.

This year, our national results reveal a 33% decrease when compared with the same sites surveyed in 2020. There are a number of potential factors explaining this decline. It is likely that issues related to COVID-19 affected bike riding activity in March. These issues may include increased preferences for working from home arrangements, an increase in car-based travel, and the gradual return of employees to offices. Environmental issues, such as weather, may have also contributed.

GENDER

The 2021 Super Tuesday Bike Count revealed females comprised 25% of all bike riders counted across Australia. This is a slight decrease of 1% when compared to the 2020 Super Tuesday count.

PEAK HOUR

As in 2020, the peak riding hour across all sites was between 7:45am and 8:45am, with a total of 50K movements recorded across the states.

RESULTS BY STATES

Tasmania

In Tasmania, riding activity decreased by 26% in 2021, compared with the same sites counted in 2020. Females comprised 28% of all riders, slightly higher than the national average of 25%.

Victoria

In Victoria, the number of riders has decreased by 36% when compared to the same sites counted in 2020. Despite this net decline, significant volume increases were observed in Wodonga and Wyndham municipal areas. Female riders comprised 27% of the total proportion of riders counted across the state.

New South Wales

Rider numbers increased by 5% in New South Wales, compared with the same sites counted in 2020. Notable areas of growth include Bayside and Canterbury-Bankstown municipal areas. However,

female riders were less than the national average, comprising only 21% of the total riders.

South Australia

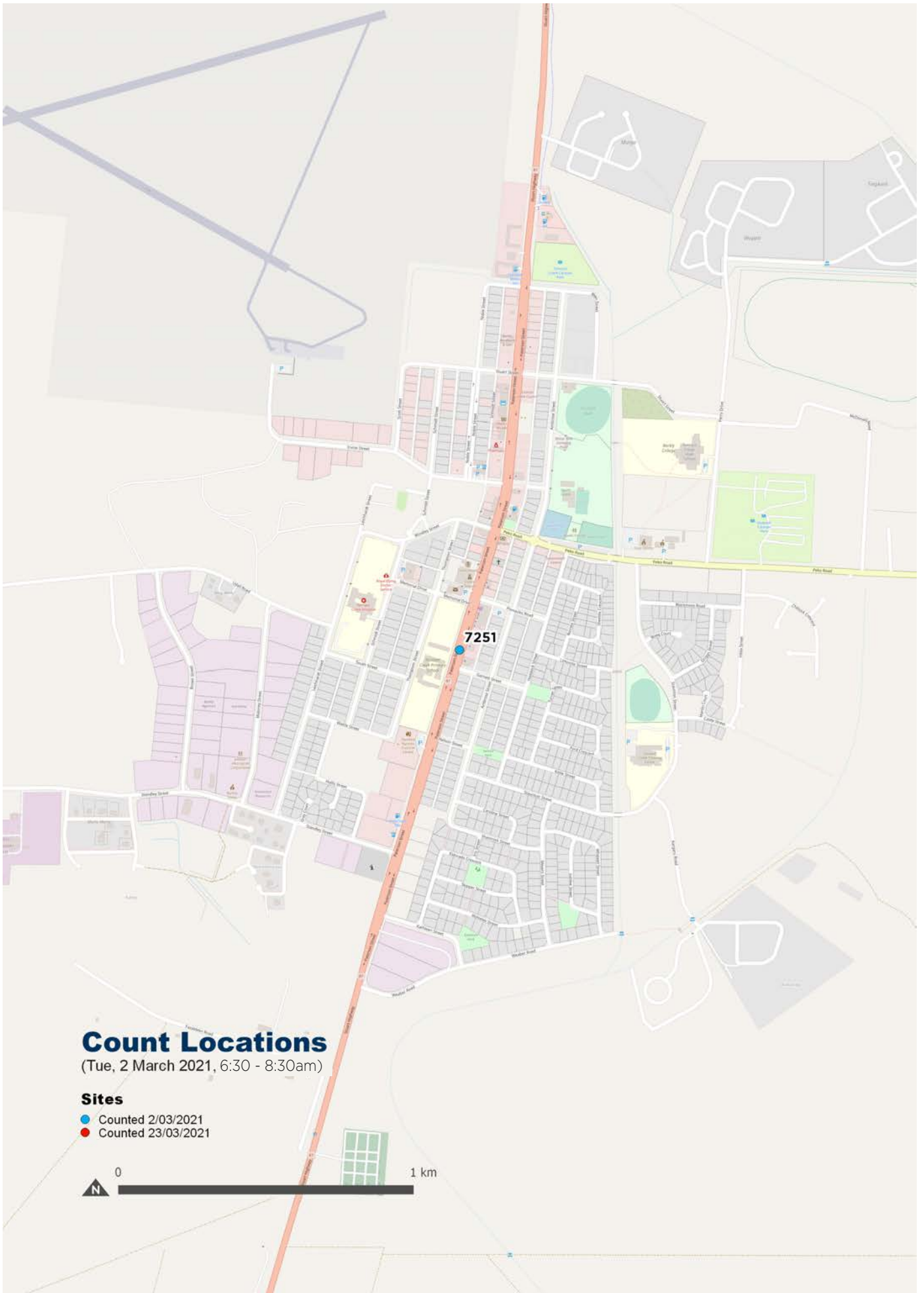
A single shire (Marion) was available for cross-comparison with 2020 results. In this area, bicycle activity has increased by 33%. In addition, females comprised 32% of the total riders counted.

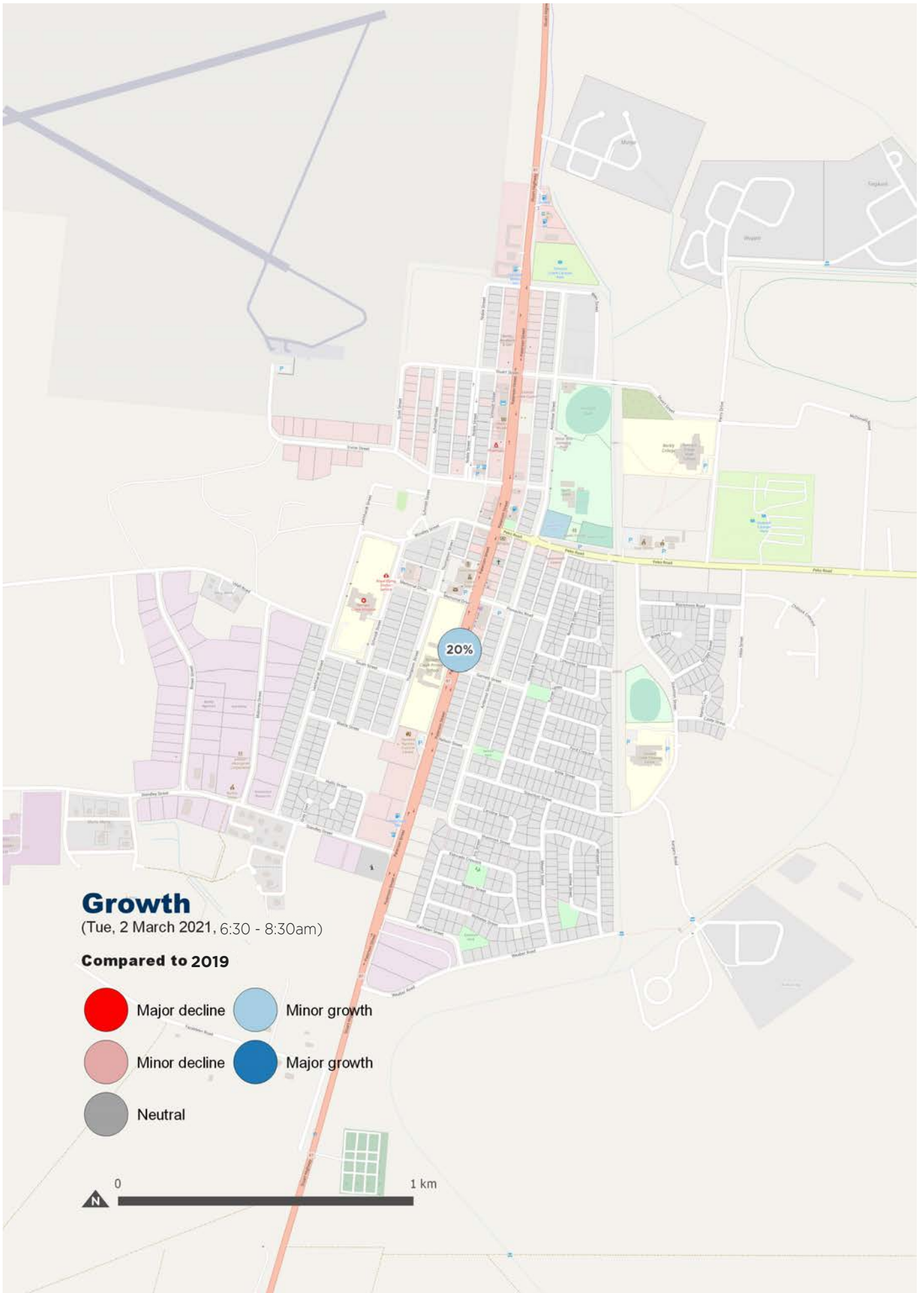
Western Australia

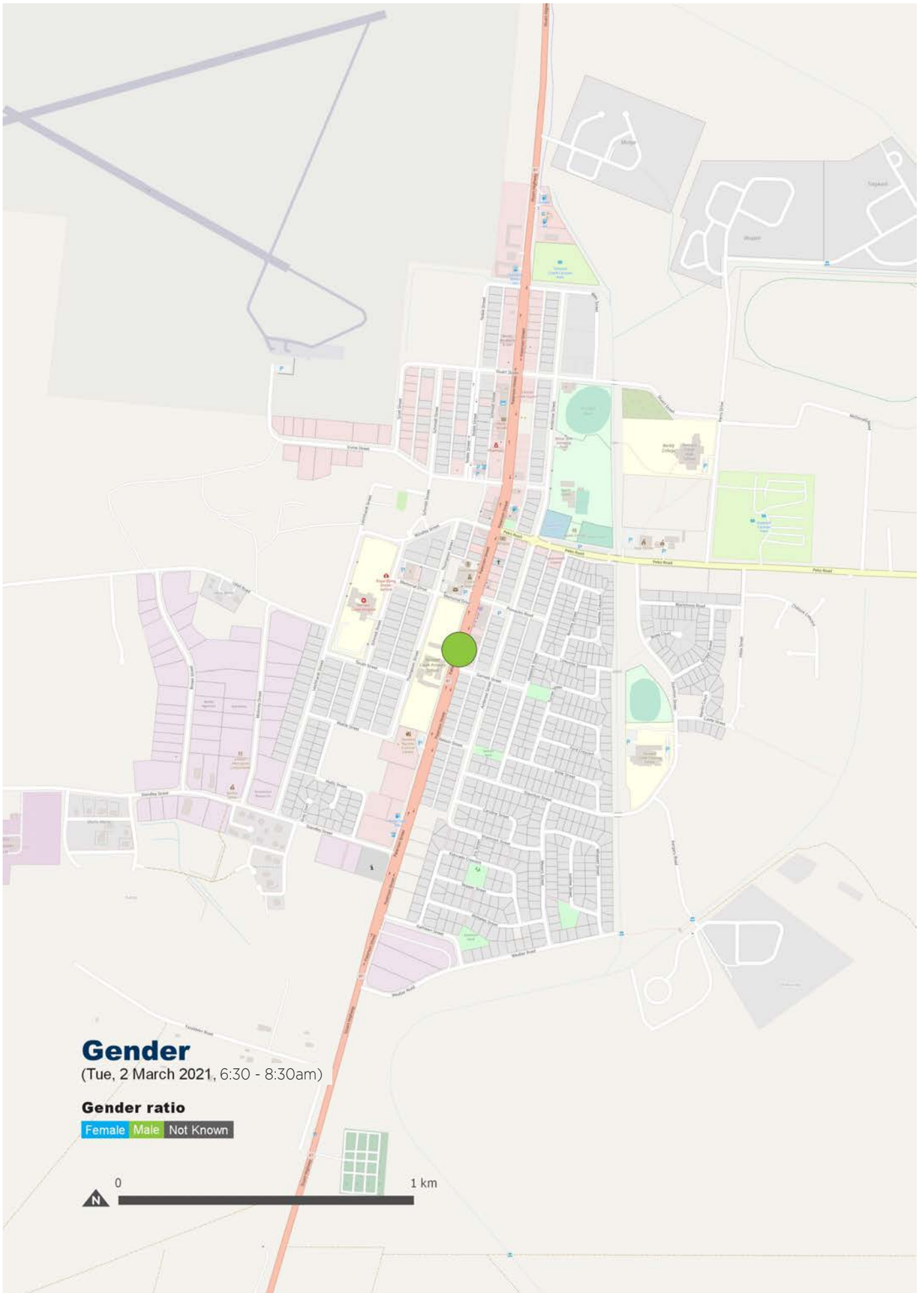
The total number of riders in Western Australia has decreased by 32%, compared to the same sites counted in 2020. Female riders comprised 19%, much lower than the national average.

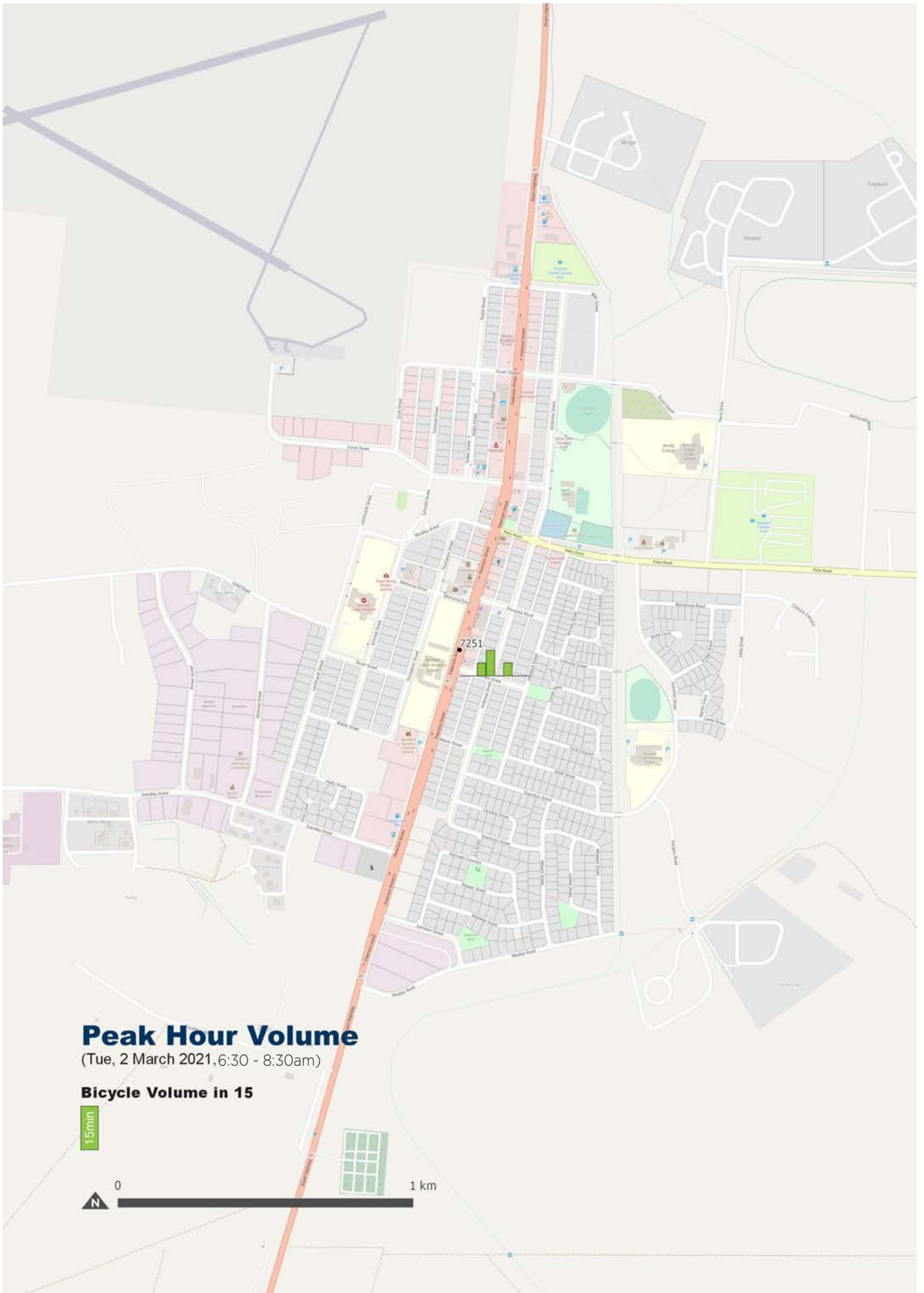
Northern Territory

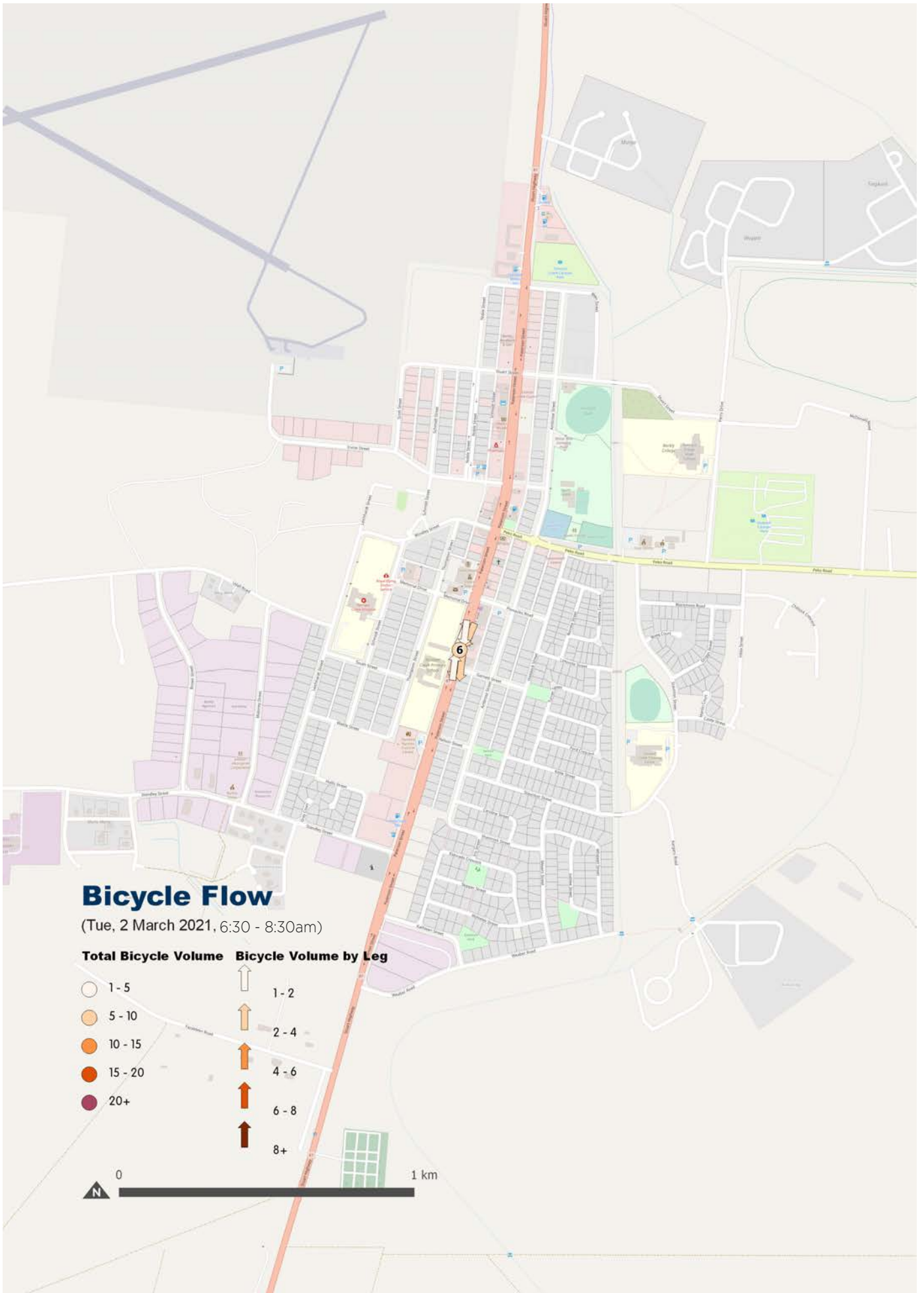
Taking part in the March count for the first time, Northern Territory has experienced a 15% increase in bike riding activity, compared to counts undertaken in September 2019. Females comprised 35% of the total riders counted, well above the national average.











Results

Site ID	Street names	Total Count					Volume in 15 Minute Intervals								
		Female	Male	Not Known	2021	2019	% Growth	6:30-6:45	6:45-7:00	7:00-7:15	7:15-7:30	7:30-7:45	7:45-8:00	8:00-8:15	8:15-8:30
7251	Northbound (school side) [N], Southbound (shop side) [NE], Southbound (shop side) [S], Northbound (school side) [SW]	0	6	0	6	5	20%	1	1	0	0	1	2	0	1

Site 7251

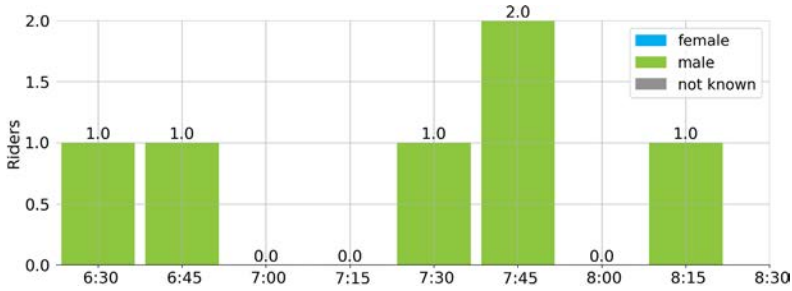
Northbound (school side) [N], Southbound (shop side) [NE], Southbound (shop side) [S], Northbound (school side) [SW]



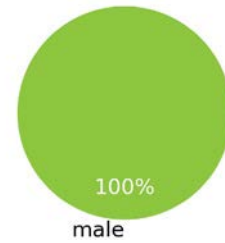
6 bicycle riders were recorded during the 2 hour survey. This is an increase of 20% compared to 5 in 2019 and an increase of 50% compared to 4 in 2018. The peak period was 07:45-08:00 with 2 riders. Female riders comprised 0% of the total.

The majority of riders at site 7251 were travelling to the south. The most active thoroughfare was from Southbound (shop side) [NE] to Southbound (shop side) [S] between 06:30 AM - 06:45 AM.

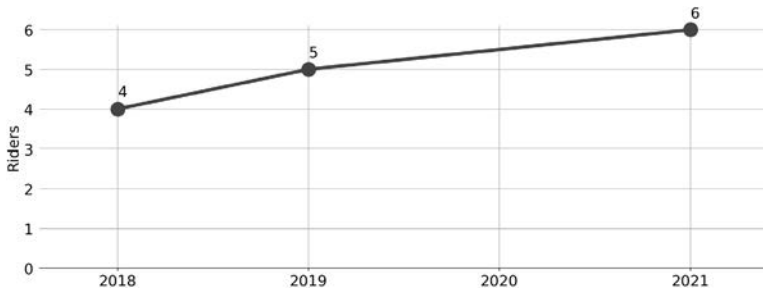
Traffic Volume by Time



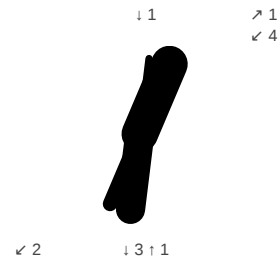
Gender Ratio



Cycling Trend



Traffic Flow



Raw Data

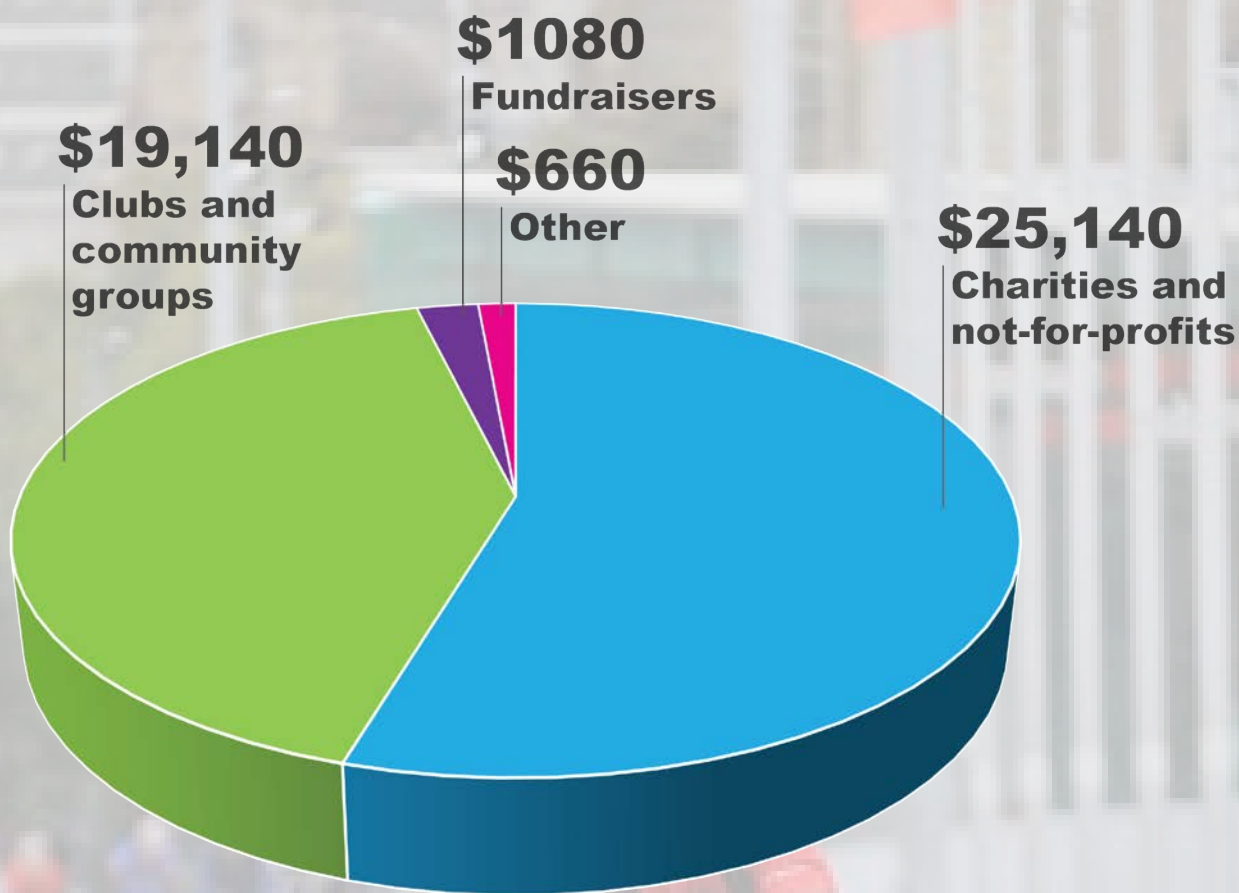
Enter	1 Northbound (school side) [N]			2 Southbound (shop side) [NE]			3 Southbound (shop side) [S]			4 Northbound (school side) [SW]			Total
Exit	2	3	4	1	3	4	1	2	4	1	2	3	
Female	0	0	0	0	0	0	0	0	0	0	0	0	0
Male	0	0	1	0	3	1	0	1	0	0	0	0	6
Not known	0	0	0	0	0	0	0	0	0	0	0	0	0
Total	0	0	1	0	3	1	0	1	0	0	0	0	6

Contributions

National contributions

The Super Tuesday Bike Count is powered by local volunteers, who collect data at council-nominated locations across Australia. In return, volunteers nominate a non-profit or charity to receive a donation of \$60, or place this contribution toward a Bicycle Network membership.

The 2021 Super Tuesday count raised **\$46,020** in donations, strengthening local communities and building better active transport outcomes.





BICYCLE NETWORK®

With nearly 50,000 members, Bicycle Network is the largest member-based bike riding organisation in Australia. At Bicycle Network, we campaign for better conditions, infrastructure and policies that make it easier and more accessible for people of all ages and abilities to ride a bike. We work closely with all levels of government to improve conditions for all people who ride.

Did you know that at Bicycle network we also do:

RIDE2SCHOOL

Our Ride2School team work collaboratively with schools, students and councils to help young people overcome the barriers preventing them from riding to school and getting active. Schools engaged in the year-long program report an active travel rate of 45 per cent, nearly double the national average. Other Ride2School initiatives include:

MIND.BODY.PEDAL - a one-day program aimed at empowering and inspiring secondary school aged females. It is designed to address the unique barriers holding teenage females back from being physically active.

ACTIVE PATHS - is a collaborative way-finding initiative, designed to make the journey to and from school as clear, fun and easy as possible!

Find out more by visiting ride2school.com.au or contacting ride2school@bicyclenetwork.com.au.

ADVOCACY AND CAMPAIGNS

We work directly with councils to help provide expert advice on transport plans, coordinating action between all levels of government, and targeting riders in specific regions to assist in consultation and community engagement efforts.

If you want our help on a bike riding issue or active transport plan in your LGA, reach out to our Public Affairs team at campaigns@bicyclenetwork.com.au

BIKE PARKING

Bicycle Network are the bike parking experts - we design, quote, construct and install a wide range of bike parking and end-of-trip facilities for Council's and private developments.

For more information, visit bicyclenetwork.com.au/bike-parking-experts or email parking@bicyclenetwork.com.au (1300 727 563)

PARKITEER BIKE CAGES - we manage 24/7 secure bike parking cages at major transport hubs on behalf of government departments.

Learn more at parkiteer.com.au or by contacting parkiteer@bicyclenetwork.com.au.

RIDES AND EVENTS

We run some of Australia's biggest bike rides including The Great Vic Bike Ride (3,000+ riders), Around the Bay (10,000+ riders), the Great Outback Escape (NT), the Newcrest Orange Classic (NSW), and many more. We also coordinate regular social bike rides to help encourage riding and discuss the concerns of the riding public.

To organise events and social rides in your LGA, visit bicyclenetwork.com.au/rides-and-events

GET IN TOUCH - If your council would like to explore opportunities to collaborate with Bicycle Network or our members in the future, please get in touch with via bikefutures@bicyclenetwork.com.au