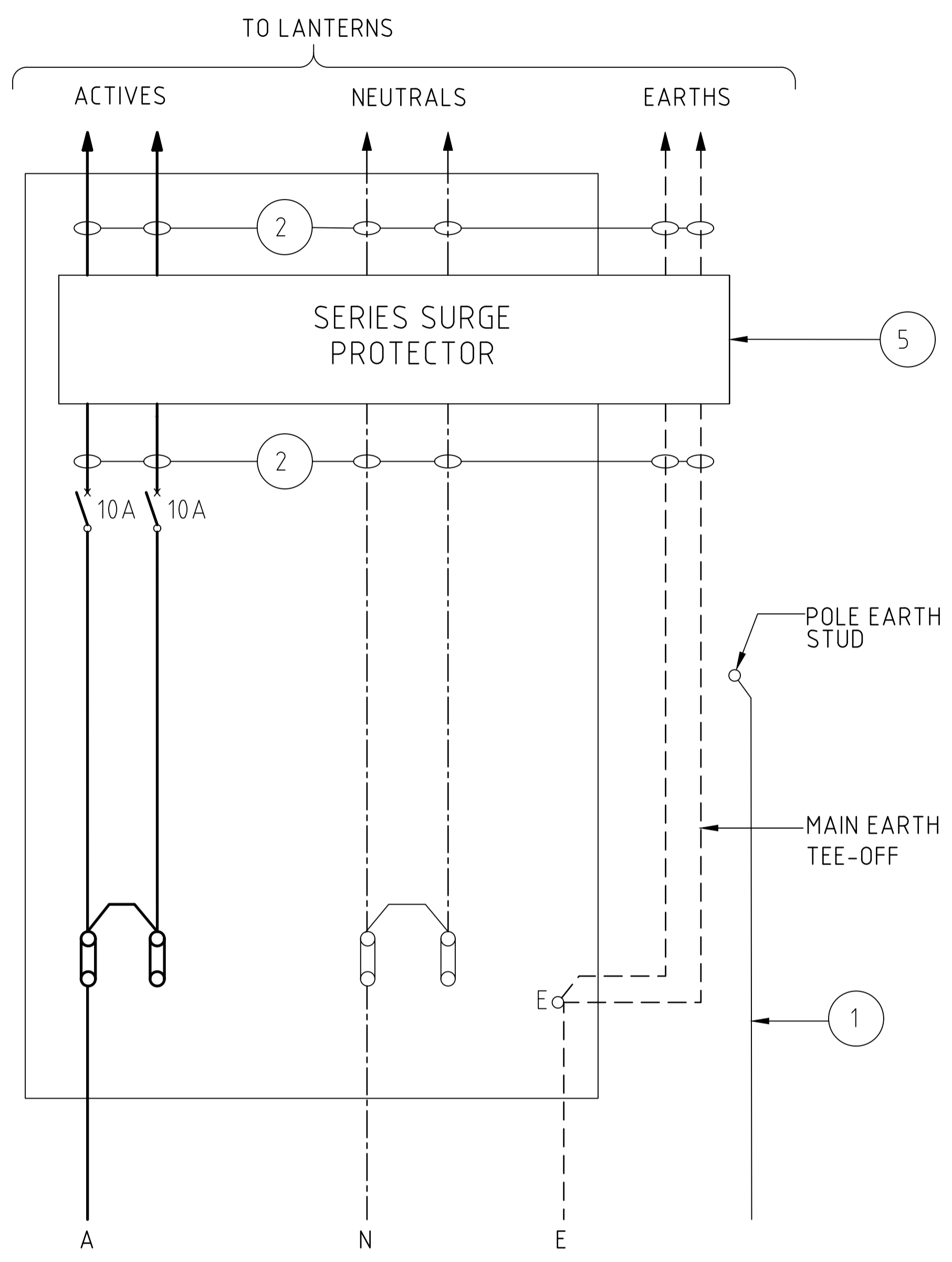


WIRING DIAGRAM
NOT TO SCALE



SCHEMATIC WIRING DIAGRAM
NOT TO SCALE

NOTES:

1. DIAGRAM SHOWS ARRANGEMENT FOR ALL COLUMNS.
2. FOR SINGLE LAMP APPLICATIONS FIT ONE CIRCUIT BREAKER AT POSITION 1.
3. FOR DOUBLE LAMP APPLICATIONS FIT TWO CIRCUIT BREAKERS AT POSITIONS 1 & 2.
4. ALL NEUTRALS SHALL BE TAILED WITH ITEM 12 USING 3 WAY TERMINAL BLOCK
5. ALL CABLES SHALL HAVE DESTINATION TAG WITH CRITCHLEY K-TYPE TAG SECURED TO THE CABLE WITH NYLON CABLE TIES.
6. WHERE CABLE PITS ARE USED EARTH JOINT USING 35 'C' CRIMP IS ALLOWED

CABLE SIZES

- 35 mm² (EQUIPOTENTIAL EARTH)
- 6 mm² PROTECTIVE EARTH
- LANTERN CABLE - FROM TERMINAL LINKS THROUGH TO LANTERN
- 4 mm² TWIN/ECC
- RED - ACTIVE
- BLACK - NEUTRAL
- YELLOW/GREEN - EARTH

LEGEND:

- A, ACTIVE (RED)
- - - N, NEUTRAL (BLACK)
- - - E, EARTH
- EP EARTH PROTECTIVE
- EE EARTH EQUIPOTENTIAL

ITEM No.	QTY.	DESCRIPTION
1	AR	35 mm ² CU BARE EARTH WIRE
2	AR	4 mm ² TWIN/ECC CABLE
3	AR	6 mm ² CU Y/GR INSULATED CABLE
4	1	3 WAY TERMINAL BLOCK (SEE NOTE 4)
5	AR	SERIES SURGE PROTECTION
6	AR	10 amp MCB

0	ISSUED AS A STANDARD DRAWING	SEP 2025	N.V.	DLI
No.	DESCRIPTION	DATE	NAME	DEPT/COMPANY
AMENDMENTS				

WARNING

BEWARE OF UNDERGROUND SERVICES. THE LOCATIONS OF UNDERGROUND SERVICES ARE APPROXIMATE ONLY AND THEIR EXACT POSITION SHOULD BE PROVEN ON SITE. NO GUARANTEE IS GIVEN THAT ALL EXISTING SERVICES ARE SHOWN.

DRAWN	PWC	CHECKED	T.Berrill
DATE		DATE	
DESIGNED	PWC	CHECKED	T.Berrill
DATE		DATE	
DESIGN LEADER		DESIGN DIRECTOR	
DATE		DATE	



STANDARD DRAWINGS STREETLIGHTING ELECTRICAL				
SWITCH PACK WIRING DIAGRAM LED STREET LIGHTING				
FILE No.	ASSET No.	SHEET No.	DRAWING No.	AMEND.
-	-	1 OF 1	CS3904	0
				SHEET SIZE A1