

# Safety Upgrades

## at Larapinta Drive, Blain Street and Diarama Close

The Northern Territory Government, in consultation with Alice Springs Town Council, is undertaking a planning study to realign the intersections of Larapinta Drive, Blain Street and Diarama Close into one signalised four way intersection. Improving the safety of motorists, cyclists and pedestrians is the priority for this project.

Larapinta Drive is a busy road and in peak hours, the intersections of Larapinta Drive, Blain Street and Diarama Close reaches capacity.

There are significant traffic hazards and delays at these intersections from vehicle and pedestrian traffic around the Araluen Christian College and the Diarama Village Shops.



Figure 1: Current intersection alignment

### Proposed concept design

To improve safety at the intersections, the Department of Infrastructure, Planning and Logistics has engaged Territory-based engineering consultant Pritchard Francis to develop a preferred concept design.

The preferred concept design includes:

- A new signalised cross intersection at Larapinta Drive/Blain Street/ Diarama Close to allow safer and more certain movements for drivers, cyclists and pedestrians.
- Realignment of Blain Street and Diarama Close to allow more direct access from Blain Street into the shops at Diarama Close.
- A new left slip lane from Blain Street into Larapinta Drive.
- A new pedestrian crossing at the new Blain Street slip lane, moving

the existing pedestrian crossing approximately 40m east.

- A new cycle lane on Blain Street to connect with the shared path.
- Rearrangement of traffic islands and medians.
- Enhanced street lighting.

As part of the concept design, two parking spaces must be removed to allow access in an out of Diarama Village Shops off Diarama Close.

Key objectives of the proposed cross intersection are to:

- improve capacity and traffic flow through the intersection area; and
- improve safety for road users including pedestrians, cyclists and limited mobility users.





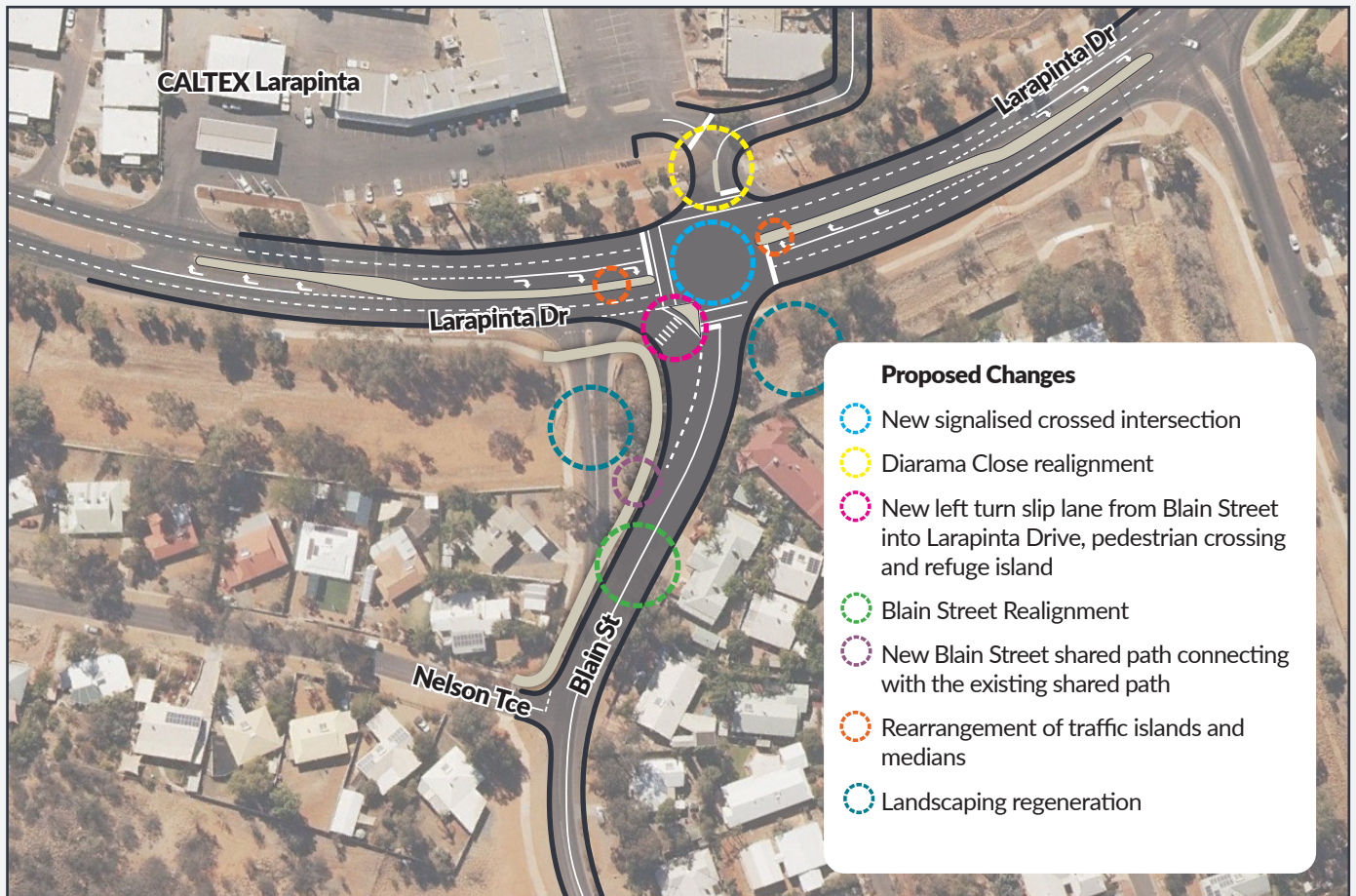


Figure 2: Proposed design

## What alternatives were considered?

In designing the new intersection, it is important to consider pedestrian safety, access, car parking spaces, land acquisition requirements and the location of existing utilities and services.

Early design planning considered the following alternatives for the intersection upgrade in consultation with the Alice Springs Town Council.

### Add traffic lights to Blain Street and Diarama Close Intersections

Although this option involves minimal changes to the road layout and provides for safer turning opportunities for vehicles, the arrangement impacts the driveway exit from the service station.

### Roundabout

This option would require a significant amount of land acquisition and would not address safety

and congestion issues for pedestrians and cyclists compared to the preferred concept design.

### Realigning only Diarama Close to form a signalised four way intersection

This option would require land acquisition of commercial areas (approximately 12 parking bays) around Diarama Close, which would impact existing businesses.

### Realigning only Blain Street to form a signalised four way intersection

This option would require the road verge to be in closer proximity to houses on the eastern side of Blain Street than the preferred concept design, and may require land acquisition.

## Get in touch

Phone: 08 8924 7118

Email: [transport.planning@nt.gov.au](mailto:transport.planning@nt.gov.au)

Please note, this is a planning study only and there is currently no funding or timeframe for construction.