



**BICYCLE
NETWORK®**

SUPER TUESDAY BIKE COUNT

Tennant Creek

2019



**SUPER
COUNTS**

About the count

About the count

The Super Tuesday Bike Count (Super Tuesday) collects reliable annual figures of bicycle commuters and their movements on roads and bike paths.

Since 2007, Bicycle Network has conducted bicycle counts at key intersections and corridors that were selected by local governments.

This information is accurate, relevant, up-to-date, and provides a longitudinal reflection of cycling activity and trends. The data is a critical tool for councils and other agencies responsible for providing bike riding facilities for their constituents.

Aims and purposes

Super Tuesday is designed to complement the surveys that individual councils and other agencies run on a regular or occasional basis.

The project aims to answer some critical questions:

- How many riders are there?
- Which routes are riders using?
- What is the year-on-year growth?
- How many women are riding?
- When is the busiest hour?

Methodology

The Super Tuesday counters collect data from intersections along popular commuter routes, as well as subsidiary routes with lower rider volumes.

Bicycle Network coordinates the count at locations nominated by traffic engineers, transport planners, and other transport officers from participating councils.

The counts were conducted by volunteer counters who record all movements, gender of riders and their observations in fifteen minute time intervals on standardised count sheets.

Following the completion of the visual count, counters send their data to Bicycle Network by one or more of the following:

- Online: by entering the data directly via the web link
- Email: by sending completed electronic tally sheet attached
- Mail: by posting hard copy to the Bicycle Network office

The submitted data are validated, analysed and visualised by Bicycle Network, and subsequently compiled into reports for participating councils and other agencies.

Count Summary in Tennant Creek



COUNT IN 2019

The Super Tuesday Bike Count was conducted on Tuesday 3 September 2019 for two hours from 6:30am to 8:30am.

It was fine in Tennant Creek on the day of the count, with moderate easterly winds reaching 22km/h, and a maximum temperature of 22.6 degrees at 9am.

By participating in the count, volunteer counters can choose a local community group to receive a donation of \$60, which goes back to the local community through donations to nominated groups.



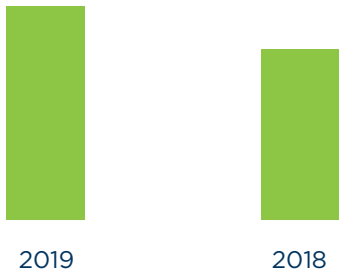
COUNT SITES

A single site (7251) was surveyed in Tennant Creek.



TRAFFIC FLOW

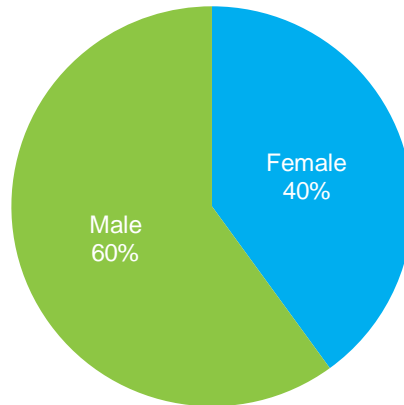
A total of 5 movements was counted at all selected intersections across the council area during the two-hour survey.



25%

GROWTH

Overall, usage has increased by 25% (5 movements) compared to 2018 (4 movements).



GENDER RATIO

Female represented 40% of bike riders across the municipality.

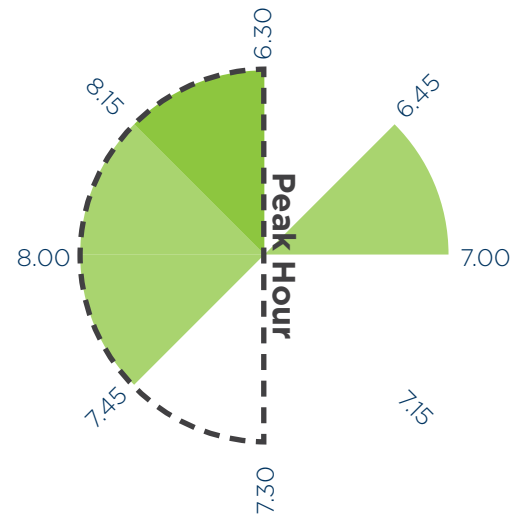
This is higher than the average female ridership across Northern Territory (30%), and the Australia-wide average of surveyed areas in 2019 (25%).

COUNT RESULTS

p. 8

The summary data table and analysis on each site are included in this chapter.

Data table in Excel spreadsheet is supplied with this report.



PEAK HOUR

The busiest hour was between 7:30 - 8:30am during the survey.

The average volume in 15 minute time intervals is as follows.

- 6:30-6:45am: 0 movements
- 6:45-7:00am: 1 movements
- 7:00-7:15am: 0 movements
- 7:15-7:30am: 0 movements
- 7:30-7:45am: 0 movements
- 7:45-8:00am: 1 movements
- 8:00-8:15am: 1 movements
- 8:15-8:30am: 2 movements

Super Tuesday in 2019

THE COUNT

Bicycle Network's Super Tuesday Bike Count is the world's biggest and longest running visual bike count, where volunteers measure bike commuter flows in the morning peak across the country. The count provides quantitative surveys with figures on the movements of bike users, helping councils provide and improve infrastructure and facilities for people riding bikes.

The Super Tuesday Bike Count was conducted on Tuesday 3 September 2019 between 7:00am and 9:00am (6:30am and 8:30am in the Northern Territory). Where necessary, a recount was conducted on Tuesday 24 September.

In the 2019 count, 1050 sites were surveyed across 48 councils. This year we welcomed Brisbane and Noosa to the Counts program, and created 168 new count sites across Australia.

Just under 150K movements were recorded nationally during the two hour count. The national site results reveals a 9% increase when compared to the same locations in 2018.

Volunteer participants were thanked with a donation of \$60 from Bicycle Network to a community group of their choice. The total donation value was over \$58K.

The 2019 Super Tuesday Bike Count suggests females comprise 25% of bike riders across Australia. This is a slight increase of 1% when compared to the 2018 Super Tuesday count.

The peak hour across all sites was between 7:45am and 8:45am, with over 80K movements recorded across the states during this time.

RESULTS BY STATES

Tasmania

The overall number of riders in Tasmania has decreased by 5% compared to the same sites as 2018. Females comprised 26% of all riders.

Victoria

In Victoria, the number of riders increased by 6% when compared to the same sites counted in 2018. Female riders comprised 26% of the total proportion of riders counted across the state, slightly higher than the national average.

New South Wales

In New South Wales, the number of riders increased by a significant 49% when compared to the same sites counted in 2018. This is due to an exceptional increase in bike rider volumes in Lake Macquarie. However, female riders comprised 19% of the total proportion of riders counted, which the lowest proportion across the states. Weather conditions were generally fine across NSW, with a warm temperature of 25.4 degrees in Sydney at 9am.

Western Australia

In Western Australia, the total number of riders increased by 10% when compared to the same sites counted in 2018. Female riders comprised 20% of the total proportion of

riders counted across the state, 5% lower than the national average.

Queensland

Council participation increased in Queensland this year, with the inclusion of Brisbane and Noosa; and the return of Cairns, who last participated in 2015.

Over 8000 movements were recorded across the 168 Queensland sites, an increase of 6%. The weather was fine during both the first and second counts. Female participation was 24%, just under the national average.

Northern Territory

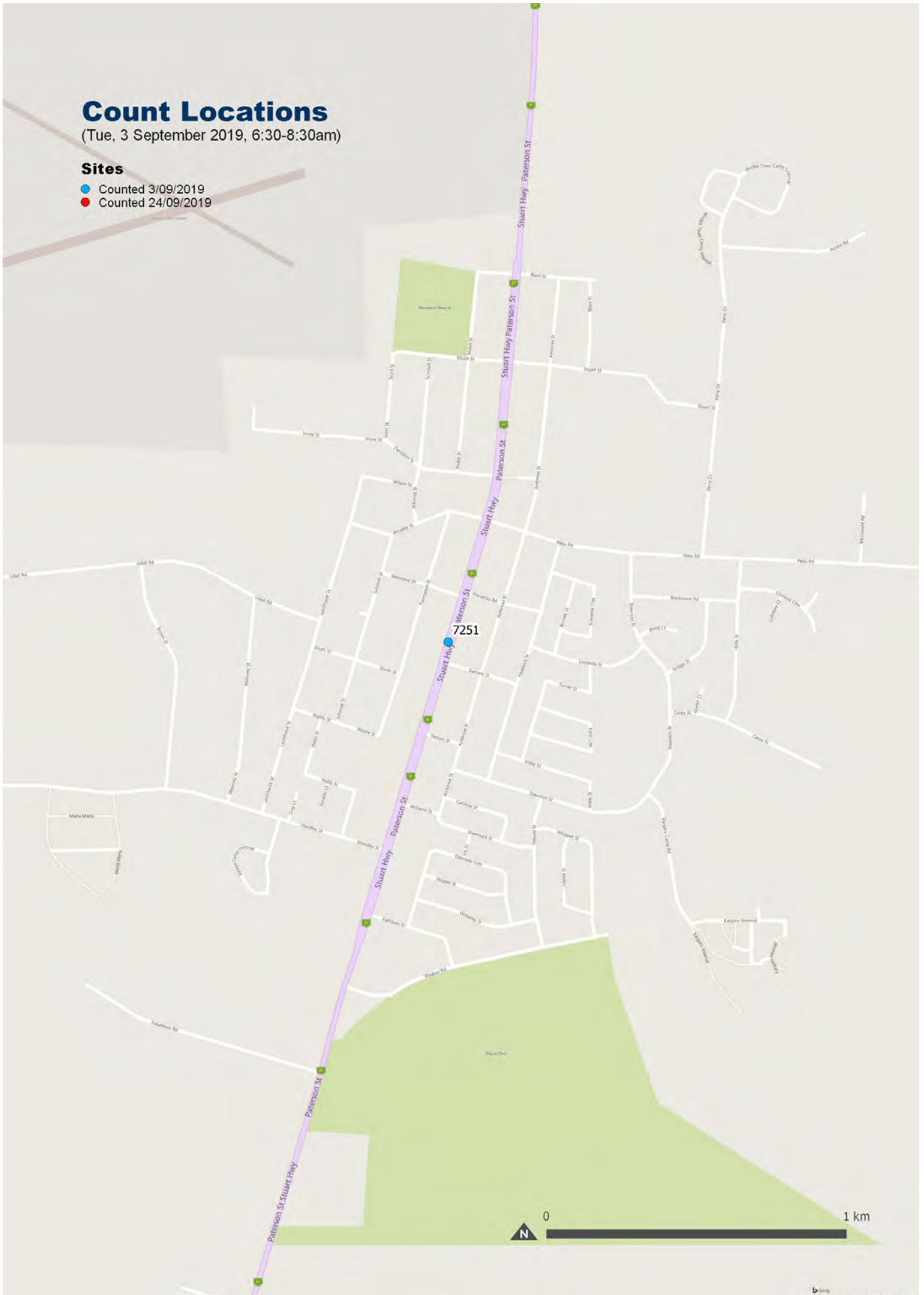
Just under 4000 movements were recorded across 75 sites in Northern Territory, a minor decrease compared to 2018. However, the state leads the country in female participation (31%), which is 6% higher than the national average. Amazing!

Count Locations

(Tue, 3 September 2019, 6:30-8:30am)

Sites

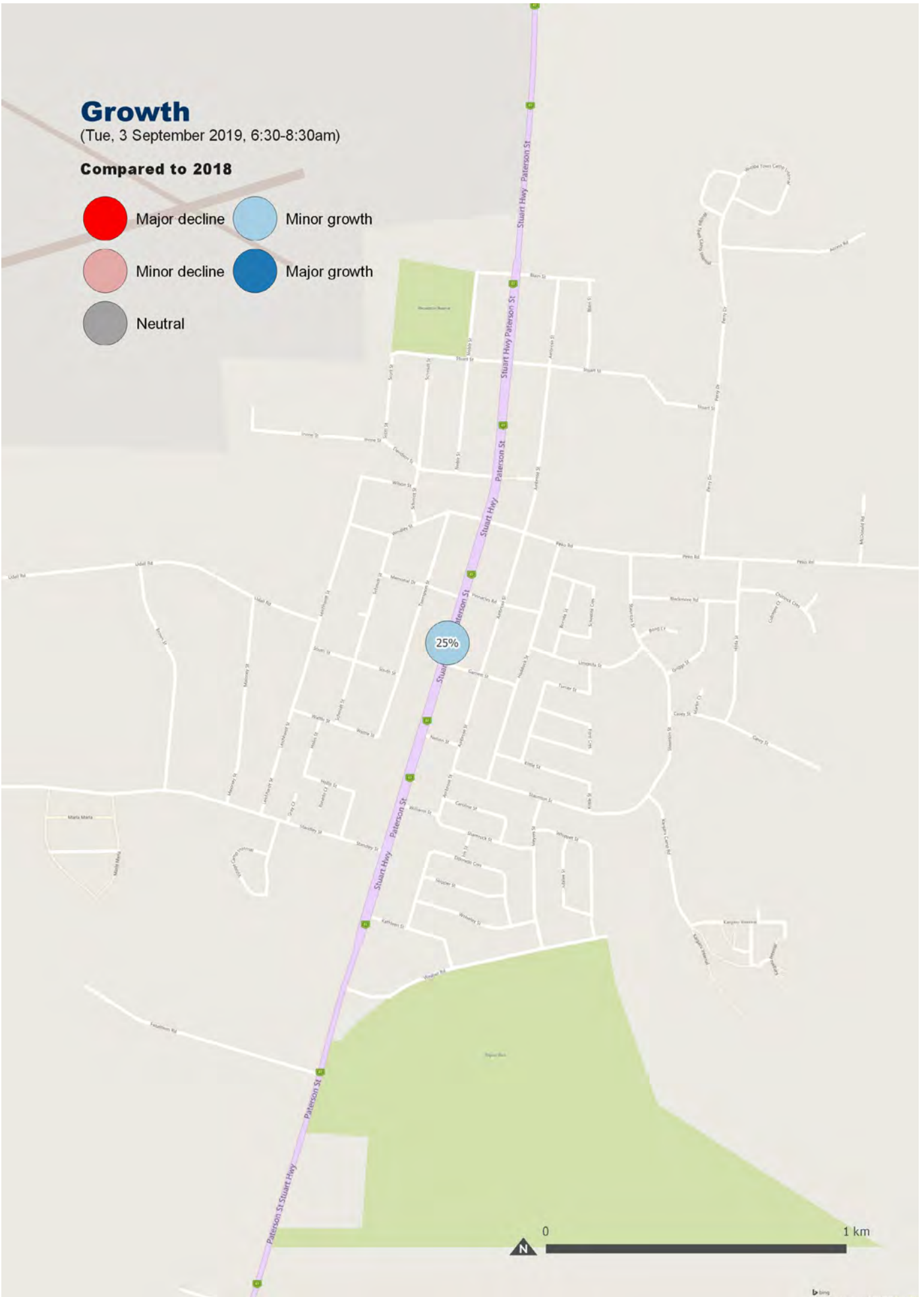
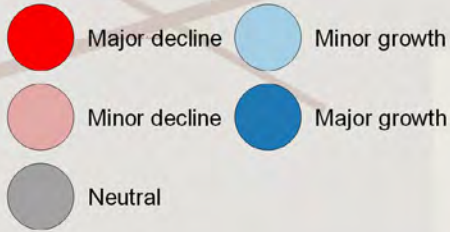
- Counted 3/09/2019
- Counted 24/09/2019



Growth

(Tue, 3 September 2019, 6:30-8:30am)

Compared to 2018

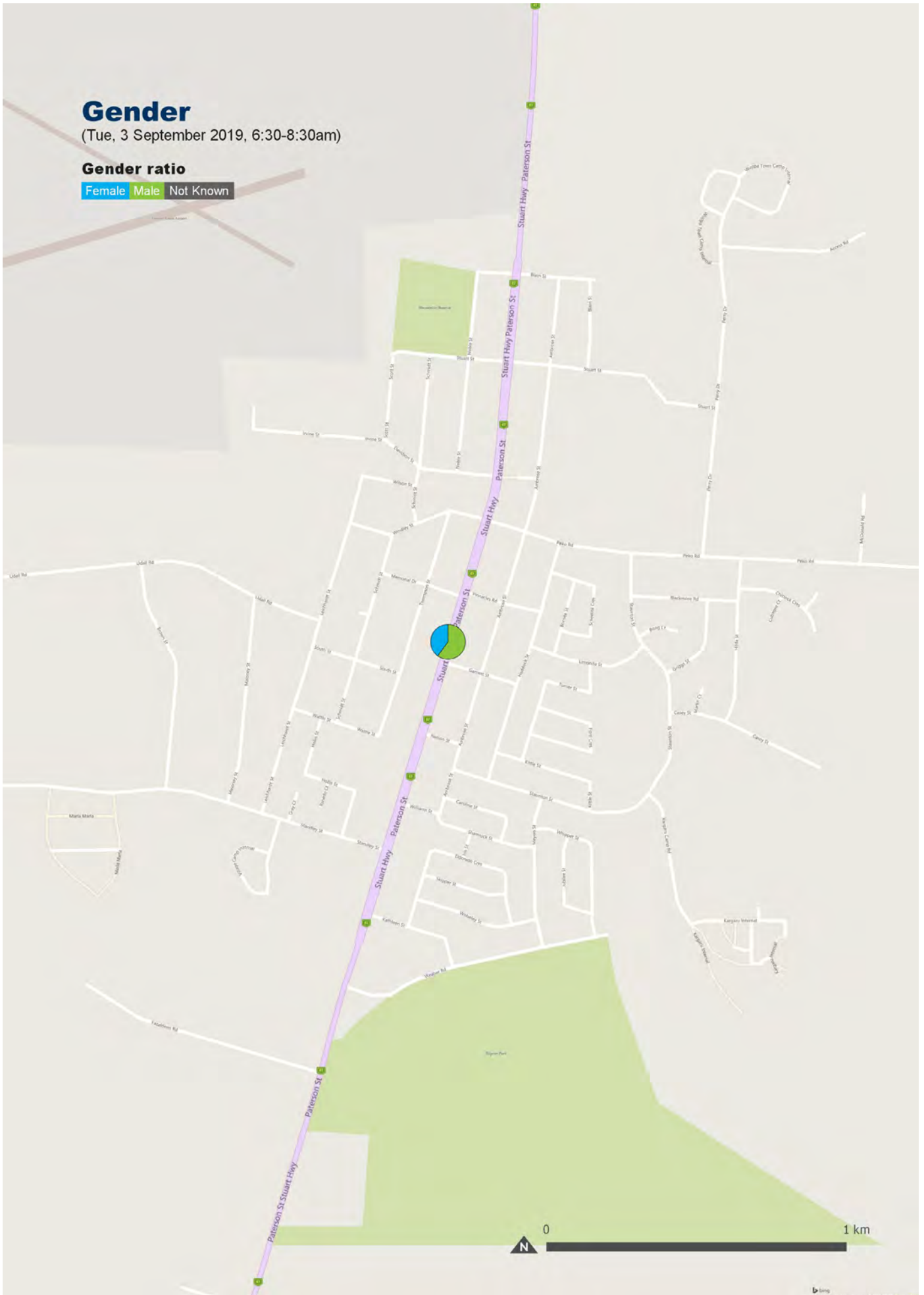


Gender

(Tue, 3 September 2019, 6:30-8:30am)

Gender ratio

Female Male Not Known

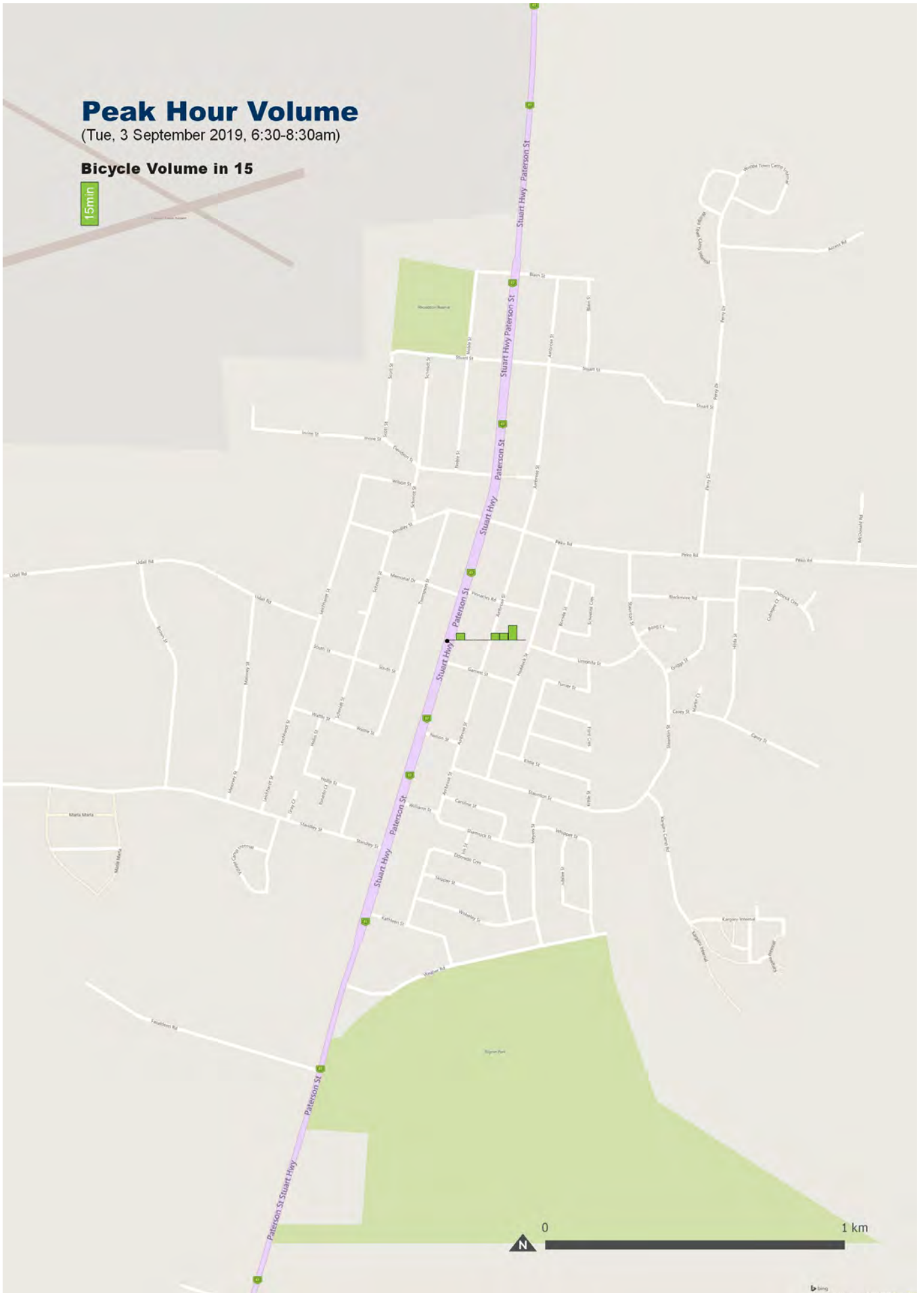


Peak Hour Volume

(Tue, 3 September 2019, 6:30-8:30am)

Bicycle Volume in 15

15min



Bicycle Flow

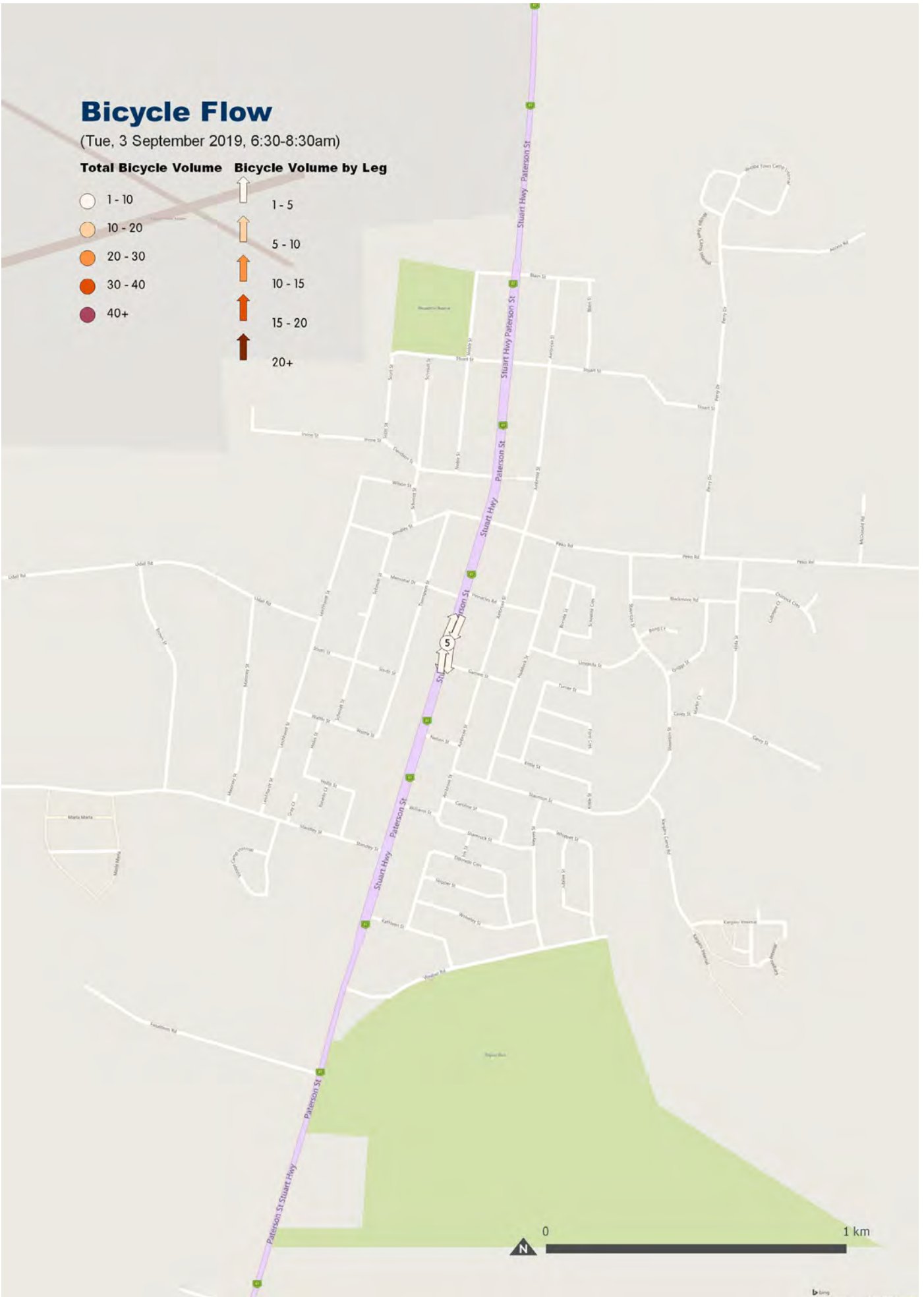
(Tue, 3 September 2019, 6:30-8:30am)

Total Bicycle Volume

- 1 - 10
- 10 - 20
- 20 - 30
- 30 - 40
- 40+

Bicycle Volume by Leg

- ↑ 1 - 5
- ↑ 5 - 10
- ↑ 10 - 15
- ↑ 15 - 20
- ↑ 20+



Results

Site ID	Street names	Total Count			Volume in 15 Minute Intervals										
		Female	Male	Not Known	2019	2018	% Growth	6:30-6:45	6:45-7:00	7:00-7:15	7:15-7:30	7:30-7:45	7:45-8:00	8:00-8:15	8:15-8:30
7251	Northbound (school side) [N], Southbound (shop side) [NE], Southbound (shop side) [S], Northbound (school side) [SW]	2	3	0	5	4	25%	0	1	0	0	0	1	1	2

Site 7251

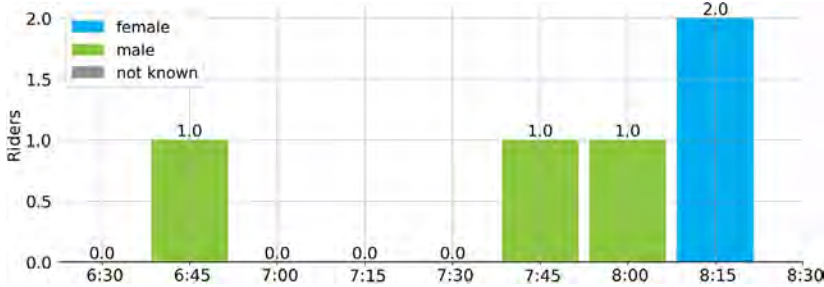
Northbound (school side) [N], Southbound (shop side) [NE], Southbound (shop side) [S], Northbound (school side) [SW]



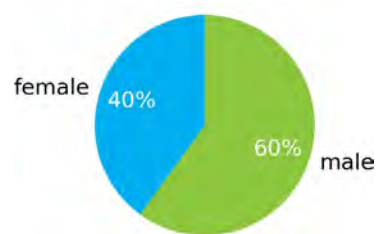
5 bicycle riders were recorded during the 2 hour survey. This is an increase of 25% compared to 4 in 2018. The peak period was 08:15-08:30 with 2 riders. Female riders comprised 40% of the total.

The most active thoroughfare in site 7251 was from Southbound (shop side) [NE] to Southbound (shop side) [S] between 07:45 AM - 08:00 AM, with 1 total riders counted during this period. There is not enough linear trend data to calculate the growth and decline of this site over time.

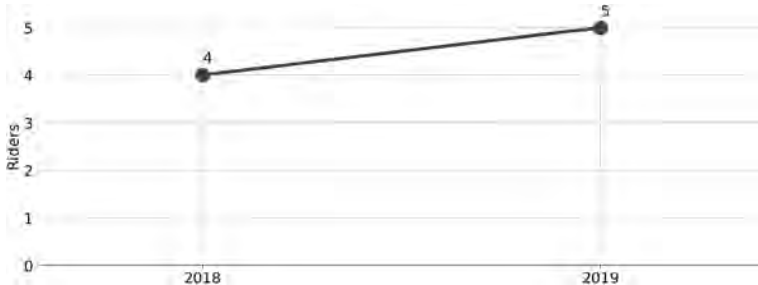
Traffic Volume by Time



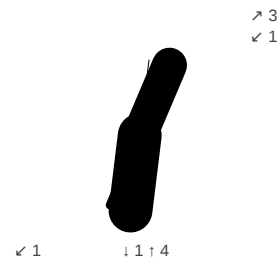
Gender Ratio



Cycling Trend



Traffic Flow



Raw Data

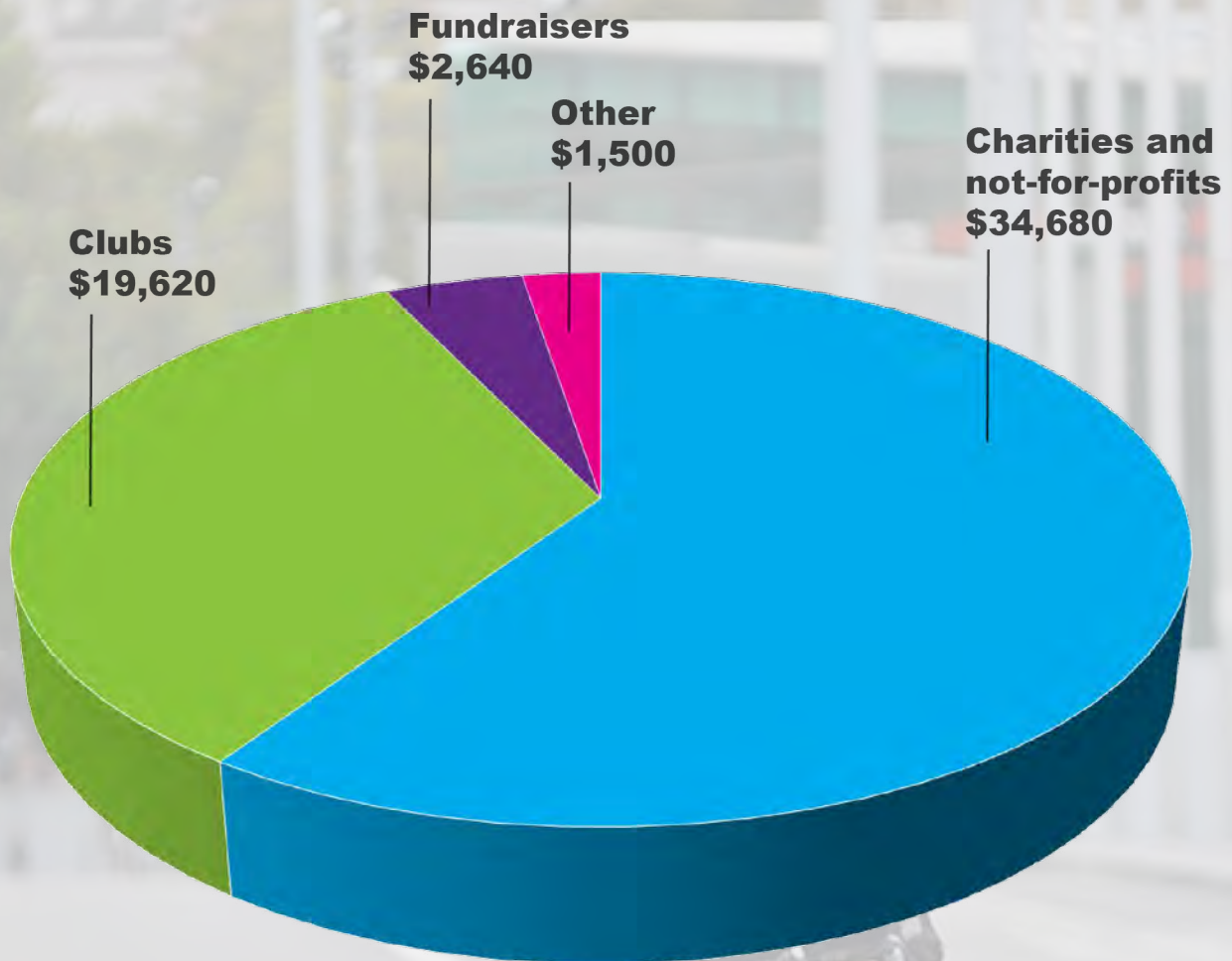
Enter	1 Northbound (school side) [N]			2 Southbound (shop side) [NE]			3 Southbound (shop side) [S]			4 Northbound (school side) [SW]			Total
Exit	2	3	4	1	3	4	1	2	4	1	2	3	
Female	0	0	0	0	0	0	0	1	1	0	0	0	2
Male	0	0	0	0	1	0	0	2	0	0	0	0	3
Not known	0	0	0	0	0	0	0	0	0	0	0	0	0
Total	0	0	0	0	1	0	0	3	1	0	0	0	5

Contributions

National contributions

The Super Tuesday Bike Count is powered by local volunteers, who collect data at council-nominated locations across Australia. In return, volunteers nominate a non-profit or charity to receive a donation of \$60, or place this contribution toward a Bicycle Network membership.

The 2019 Super Tuesday count raised \$58,440 in donations nationally, strengthening local communities and building better active transport outcomes.





BICYCLE NETWORK®

With nearly 50,000 members, Bicycle Network is the largest member-based bike riding organisation in Australia. At Bicycle Network, we campaign for better conditions, infrastructure and policies that make it easier and more accessible for people of all ages and abilities to ride a bike. We work closely with all levels of government to improve conditions for all people who ride.

Did you know that at Bicycle network we also do:

RIDE2SCHOOL

Our Ride2School team work collaboratively with schools, students and councils to help young people overcome the barriers preventing them from riding to school and getting active. Schools engaged in the year-long program report an active travel rate of 45 per cent, nearly double the national average. Other Ride2School initiatives include:

MIND.BODY.PEDAL - a one-day program aimed at empowering and inspiring secondary school aged females. It is designed to address the unique barriers holding teenage females back from being physically active.

ACTIVE PATHS - is a collaborative way-finding initiative, designed to make the journey to and from school as clear, fun and easy as possible!

Find out more by visiting ride2school.com.au or contacting ride2school@bicyclenetwork.com.au.

ADVOCACY AND CAMPAIGNS

We work directly with councils to help provide expert advice on transport plans, coordinating action between all levels of government, and targeting riders in specific regions to assist in consultation and community engagement efforts.

If you want our help on a bike riding issue or active transport plan in your LGA, reach out to our Public Affairs team at campaigns@bicyclenetwork.com.au

BIKE PARKING

Bicycle Network are the bike parking experts - we design, quote, construct and install a wide range of bike parking and end-of-trip facilities for Council's and private developments.

For more information, visit bicyclenetwork.com.au/bike-parking-experts or email parking@bicyclenetwork.com.au (1300 727 563)

PARKITEER BIKE CAGES - we manage 24/7 secure bike parking cages at major transport hubs on behalf of government departments.

Learn more at parkiteer.com.au or by contacting parkiteer@bicyclenetwork.com.au.

RIDES AND EVENTS

We run some of Australia's biggest bike rides including The Great Vic Bike Ride (3,000+ riders), Around the Bay (10,000+ riders), the Great Outback Escape (NT), the Newcrest Orange Classic (NSW), and many more. We also coordinate regular social bike rides to help encourage riding and discuss the concerns of the riding public.

To organise events and social rides in your LGA, visit bicyclenetwork.com.au/rides-and-events

GET IN TOUCH - If your council would like to explore opportunities to collaborate with Bicycle Network or our members in the future, please get in touch with via bikefutures@bicyclenetwork.com.au