

# Chung Wah Terrace and Emery Avenue roundabout

## Construction works – Emery Avenue closure

Dear Stakeholder

The Department of Infrastructure, Planning and Logistics (DIPL) is conducting works for the construction of a new roundabout at the intersection of Chung Wah Terrace and Emery Avenue, Palmerston.

From 30 May 2024, access to and from Emery Avenue at Chung Wah Terrace will be affected. The intersection will be closed for an extended period to ensure the safety of road users and workers.

A detour via Sibbald Crescent will be in place for motorists to access Chung Wah Terrace from Emery Avenue. Motorists are encouraged to consider alternative routes when planning their drive.

Chung Wah Terrace will operate as one lane each way, with a reduced speed limit in the vicinity of the works.

Access to Emery Avenue from Temple Terrace and residents' property will not be affected.

Pedestrian access in the vicinity of the works will be maintained throughout the construction period. All pedestrians are advised to adhere to signage in place

Work will occur Monday to Saturday, and night works will be required at certain times, with residents notified in advance.

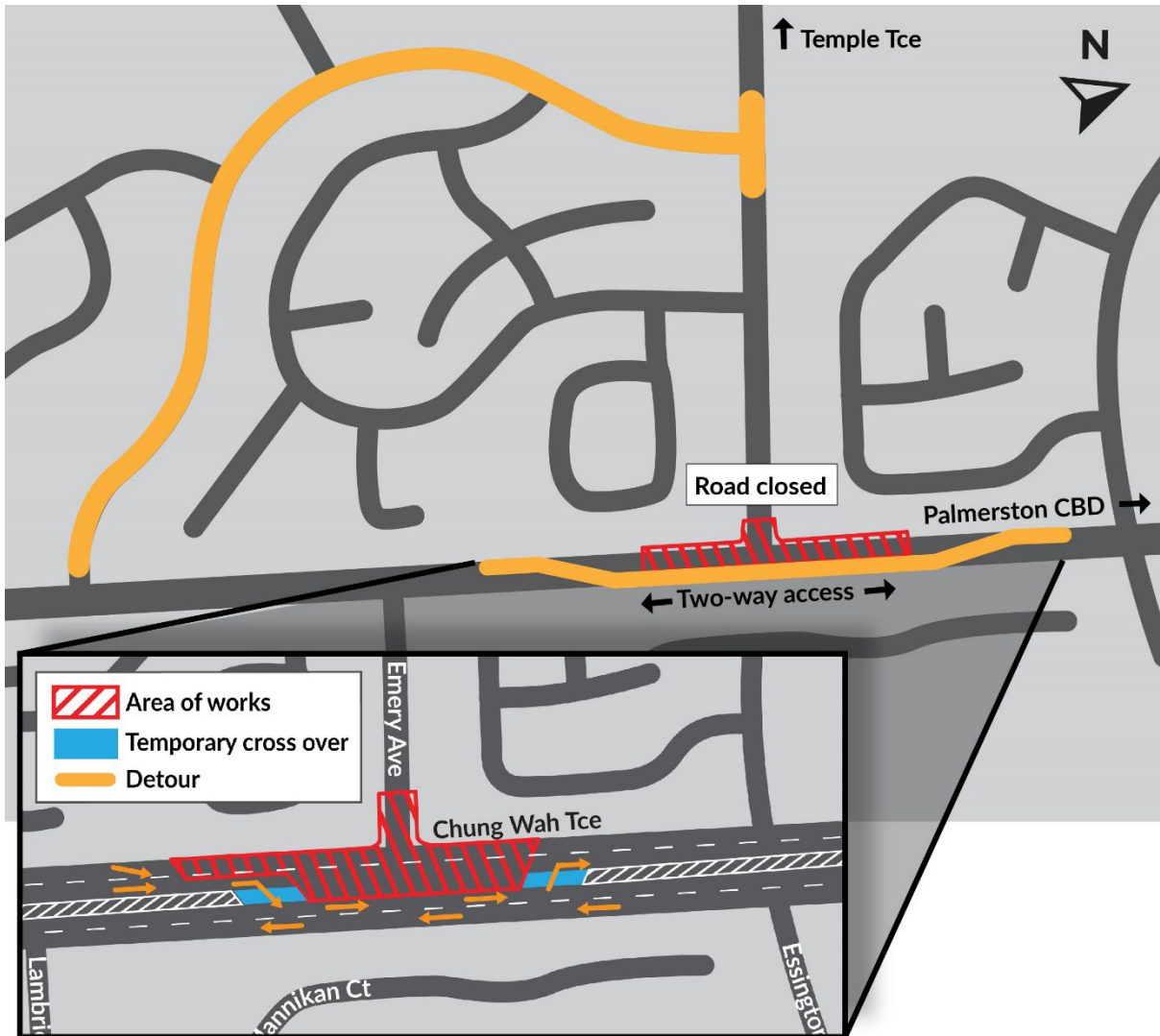
Traffic conditions are subject to change, including lane closures and speed restrictions as contractors undertake works.

Work is anticipated to take 6 months to complete.

For further information about the project, visit [dipl.nt.gov.au/projects](https://dipl.nt.gov.au/projects).

### Contact

To find out more, contact DIPL Project Manager John Kassaras on phone 8999 4788 or email [john.kassaras@nt.gov.au](mailto:john.kassaras@nt.gov.au).



Map showing road closure and detour for works at Chung Wah Terrace and Emery Avenue, Palmerston.