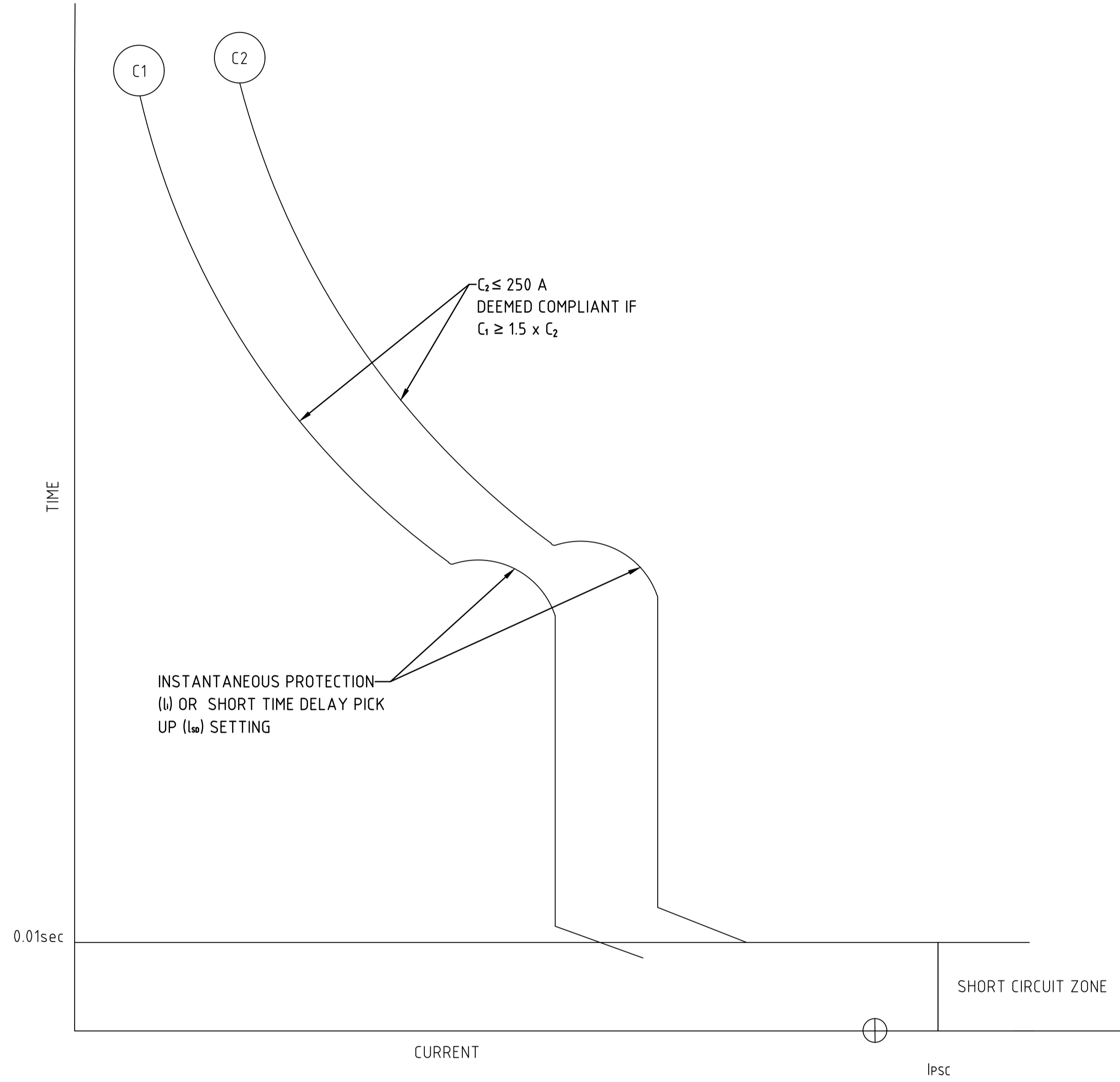
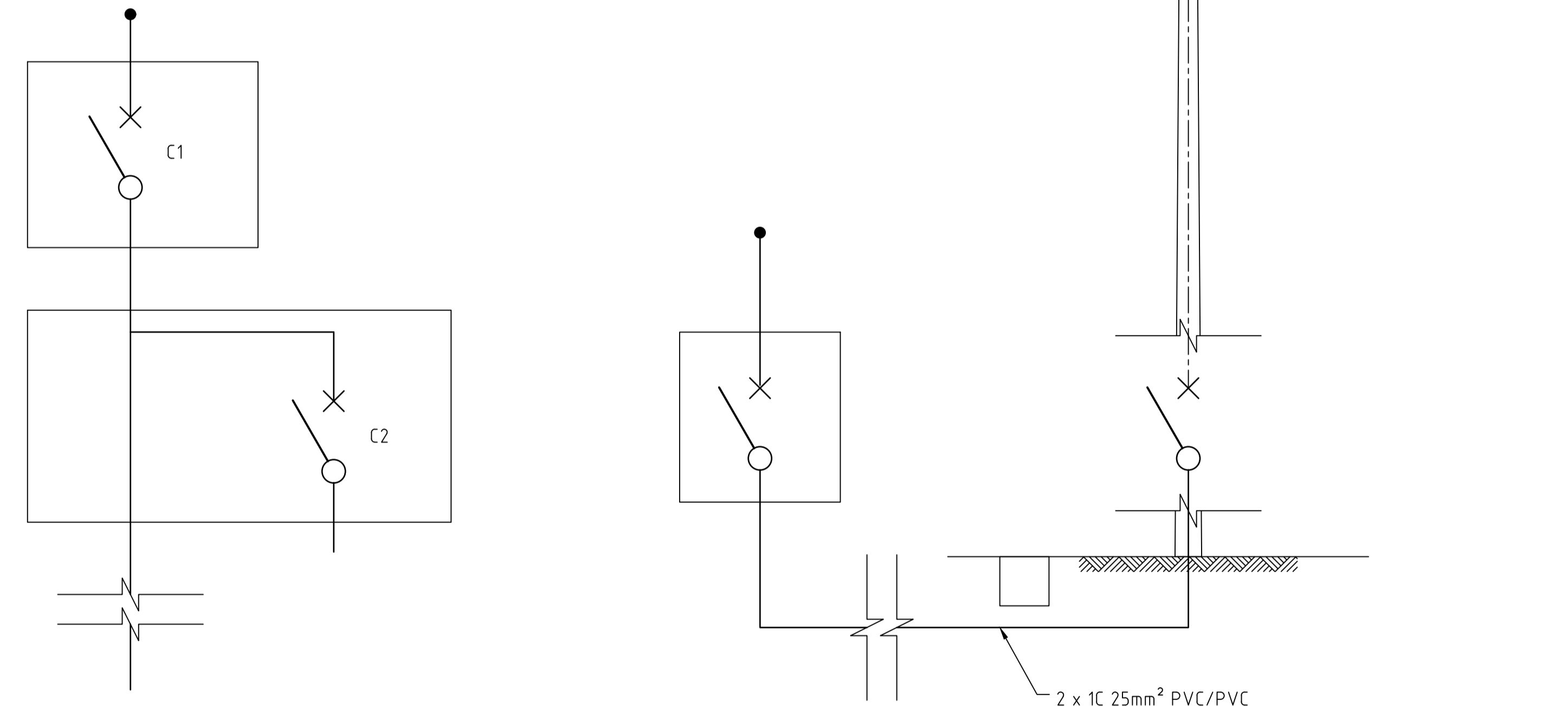


NOTES:

1. ALL DESIGN WORKS ARE TO COMPLY TO AS/NZ 3000 AND AS/NZS 1158 SERIES.
2. FROM THE POINT OF ATTACHMENT TO PWC SUPPLY TO THE END OF THE FINAL SUBCIRCUIT, THE MAXIMUM VALUE OF VOLTAGE DROP IS 5%.
3. THE CIRCUIT BREAKERS ARE TO BE SIZED TO ENSURE THERE IS SEGREGATION BETWEEN BREAKERS.
4. THE LUMINAIRE SELECTED SHALL ENSURE THAT THE LIGHTING LEVEL MATCHES THE V, PR, PP, PA PE OR PC RATING FOR THAT SECTION OF THE ROAD.



POINT OF ATTACHMENT



0	ISSUED AS A STANDARD DRAWING	SEP 2025	N.V.	DLI
No.	DESCRIPTION	DATE	NAME	DEPT/COMPANY
AMENDMENTS				

WARNING
 BEWARE OF UNDERGROUND SERVICES.
 THE LOCATIONS OF UNDERGROUND SERVICES ARE APPROXIMATE ONLY AND THEIR EXACT POSITION SHOULD BE PROVEN ON SITE. NO GUARANTEE IS GIVEN THAT ALL EXISTING SERVICES ARE SHOWN.

DRAWN	GHD	CHECKED	GHD
DATE		DATE	
DESIGNED	GHD	CHECKED	GHD
DATE		DATE	
DESIGN LEADER		DESIGN DIRECTOR	
DATE		DATE	



STANDARD DRAWINGS STREETLIGHTING ELECTRICAL DISCRIMINATION AND PROTECTION					
FILE No.	ASSET No.	SHEET No.	DRAWING No.	AMEND.	SHEET SIZE
-	-	1 OF 1	CS3907	0	A1