

12D Instruction

Loading AutoCAD Map File into 12D software by steps.

Purpose:-

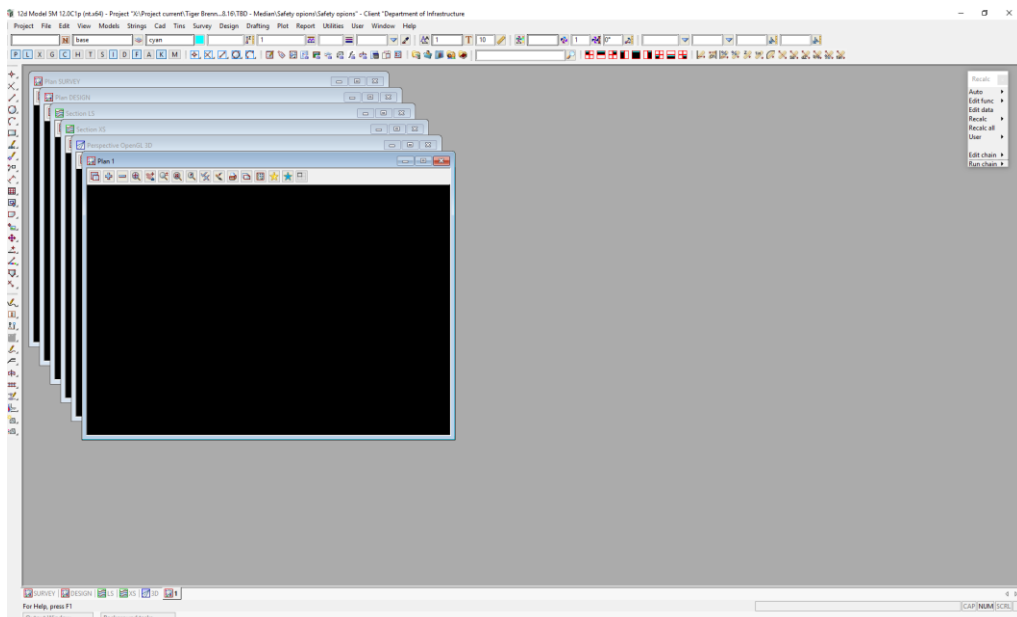
The purpose of the mapping file is to convert AutoCAD information into 12D and back again in AutoCAD using the same Line Styles and model naming conventions. This is to streamline line types and their naming convention to simplify processes, improve quality assurance and time management.

The Map file contains all the AutoCAD names and line styles for each layer from the NTG Civil and Survey profiles. These files have been matched to the equivalent line styles from the 12D library and the name convention is carried. There are some line styles that are not a complete match so an appropriate line style has been chosen from the 12D library.

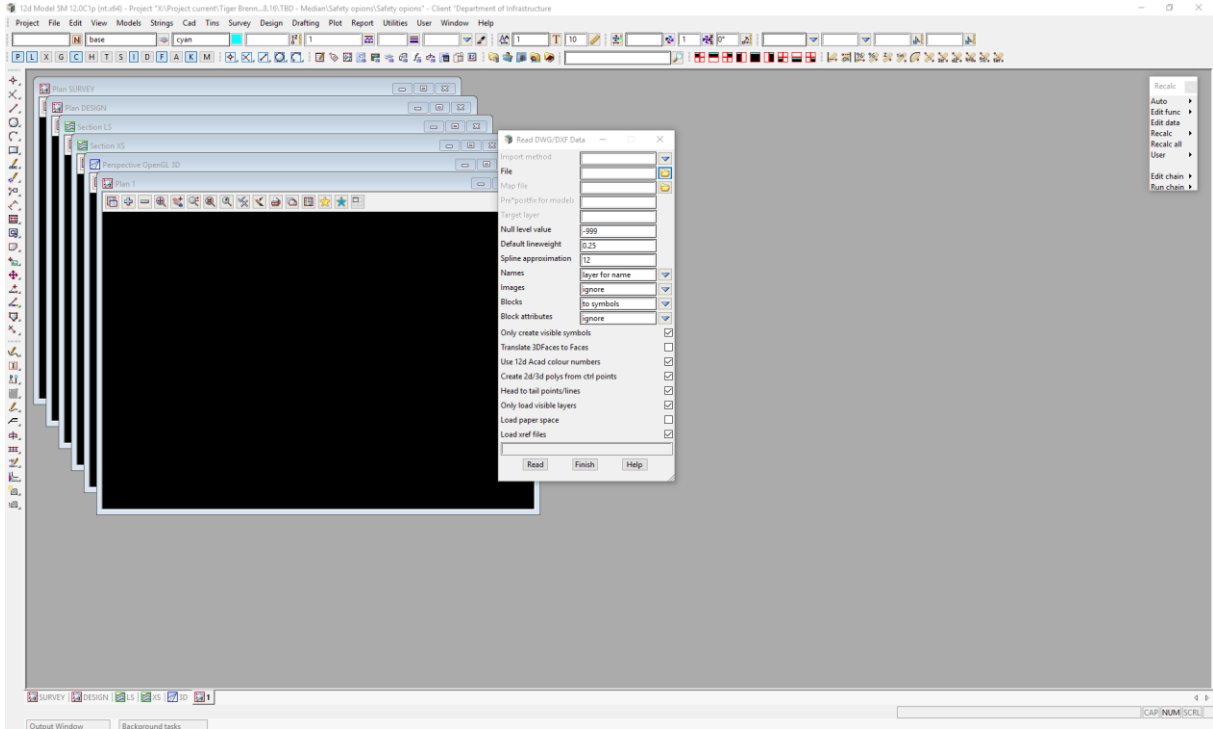
Installation of mapping file:-

The installation of the mapping file occurs when importing any CAD files.

1. Install the map file in C:\12d\V12\user_lib.
2. Open 12D Software and start up the project you are working on.

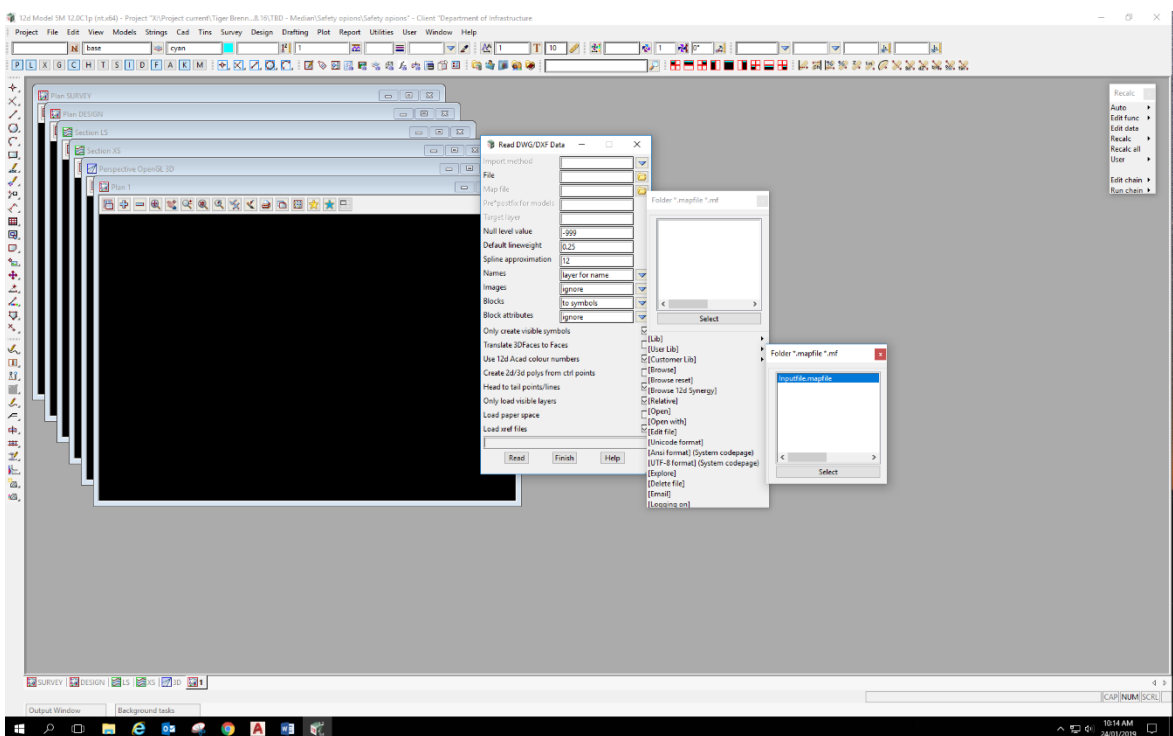


3. Go to File > Data Input > DWG/DXF/DXB



4. Under File select [Browse] and find and select file you wish to input.

5. Under Map file select [User Lib] and select Inputfile.mapfile



6. Click on read, all done.

7. To check the input file click on open under the Map file folder on the right and select Basic

