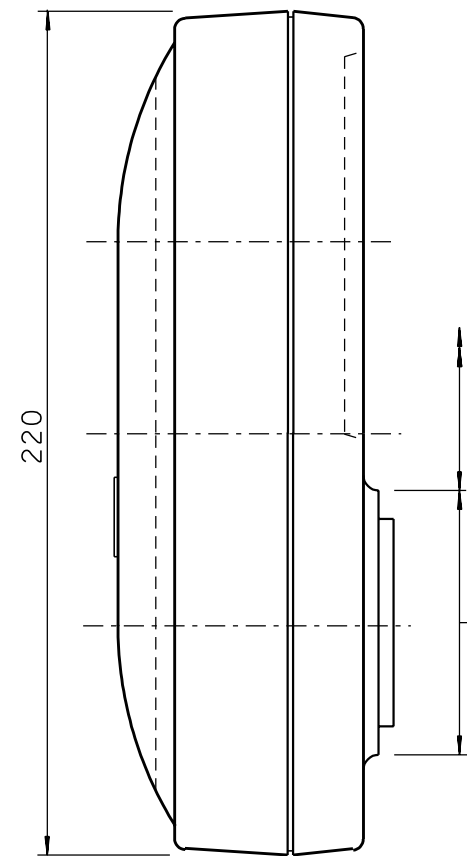
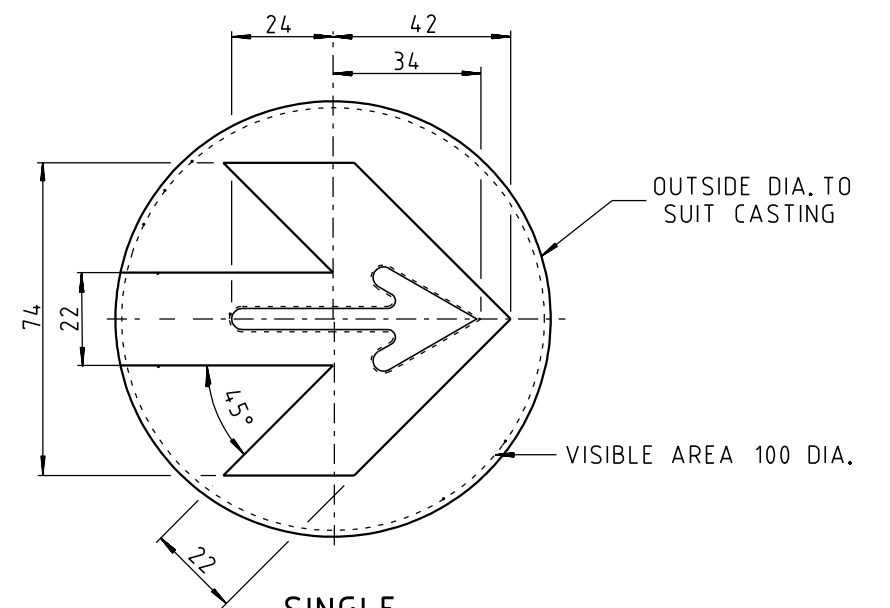


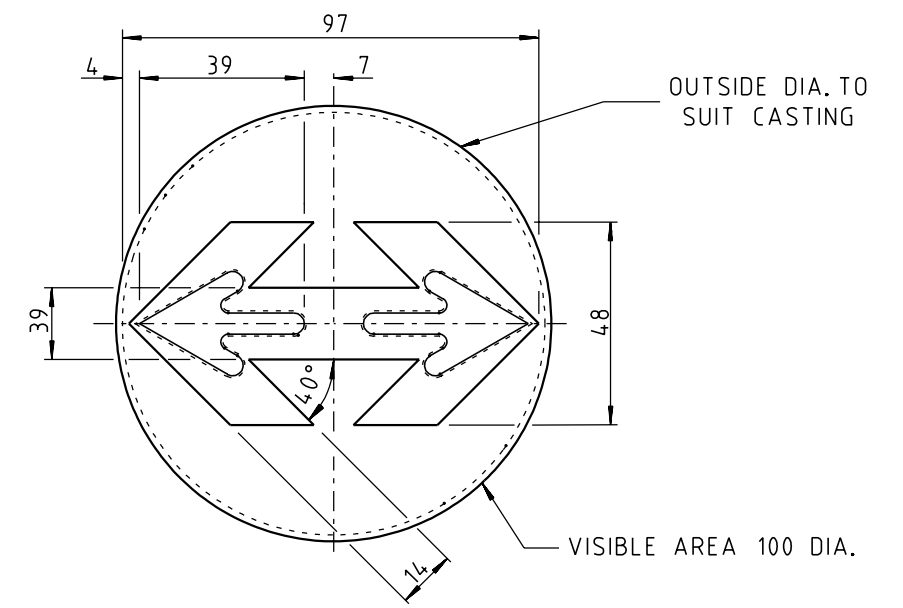
**FRONT**  
NOT TO SCALE



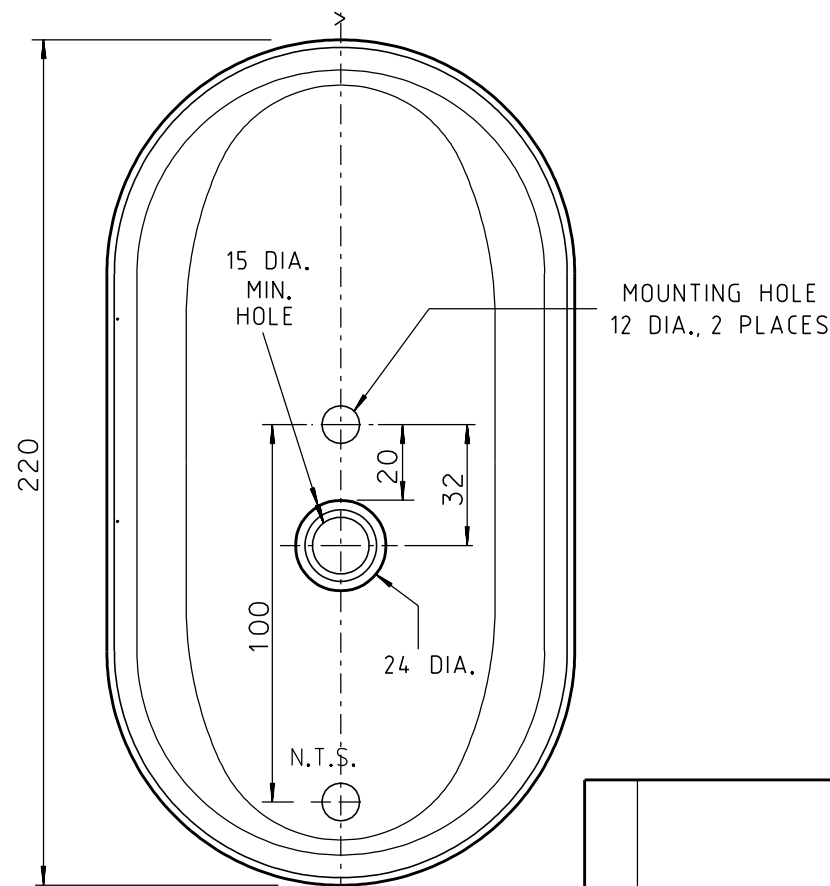
**SIDE VIEW**  
NOT TO SCALE



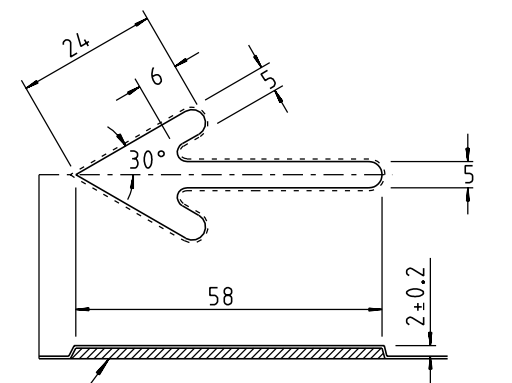
**SINGLE**  
NOT TO SCALE



**DOUBLE**  
NOT TO SCALE



**BACK**  
NOT TO SCALE

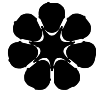


**DETAIL OF RAISED ARROW**  
NOT TO SCALE

- A) MATERIAL ALUMINIUM SHEET : 0.8mm THICK.  
 B) FINISH : GLOSS ANODISE.  
 C) COLOUR : i) ARROW - CLEAR  
 ii) SURROUND - SANODAL BLUE G506  
 TO CONFORM TO P.M.S.\* 288  
 (\* P.M.S. = PANTONE MATCHING SYSTEM)

**NOTES**

1. CAST METAL FILLER, UNDERNEATH ALL RAISED ARROWS EXCEPT IN AUDIO TACTILE APPLICATIONS.
2. ANODISING SHALL CONFORM TO A.S.1231, CLASS AA 25.
3. THE FACE OF THE PEDESTRIAN PUSH BUTTON UNITS SHALL BE ON THE SIDE OF THE POLE WHERE THE PEDESTRIAN CROSSING IS INDICATED ON THE PROJECT DRAWINGS AND BE ORIENTATED AT 90 DEGREES TO THE KERB FACE, SUCH THAT A PEDESTRIAN STOOD AT THE KERBSIDE AT THE CROSSING PLACE AND FACING THE POLE MOUNTING THE BUTTON CAN CLEARLY SEE THE FACE OF THE UNIT. THE ORIENTATION SHOWN ON THE PROJECT DRAWINGS IS ONLY INDICATIVE AND THE ORIENTATION SHOULD NOT BE VARIED FROM THE ABOVE STANDARD UNLESS THERE IS A SEPARATE NOTE TO THIS EFFECT FOR EACH PUSH BUTTON ON THE PROJECT DRAWING.

1. GOVERNMENT DEPARTMENT LOGOS CHANGED.		5/2002	K.S.	DRAWN K. SCHULZE	CHECKED	 <b>Northern Territory Government</b> Department of Infrastructure, Planning and Environment	<b>STANDARD DRAWING</b> <b>SIGNAL DETAILS</b> <b>PEDESTRIAN PUSH BUTTON</b>			
No.	DESCRIPTION	DATE	INIT.	DATE	DATE				FILE No.	SHEET No.
	AMENDMENTS			DESIGN PROJECT LEADER <i>William Morris</i>	PROJECT OFFICER		1 OF 1	C(S)1506	1	A1
				DATE 29 MAY 2002	DATE					