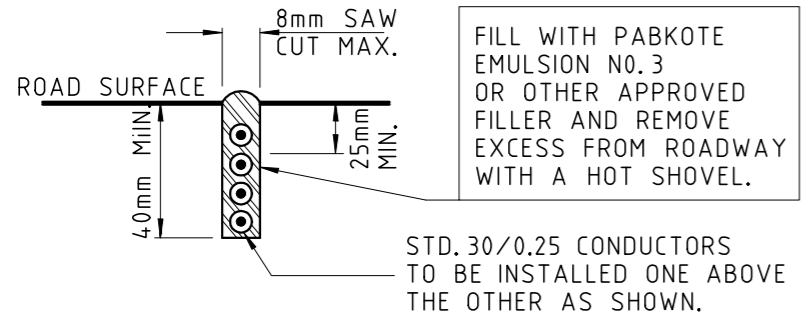
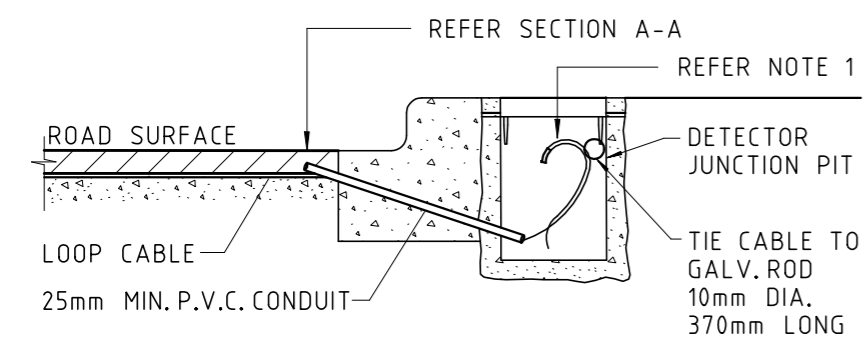


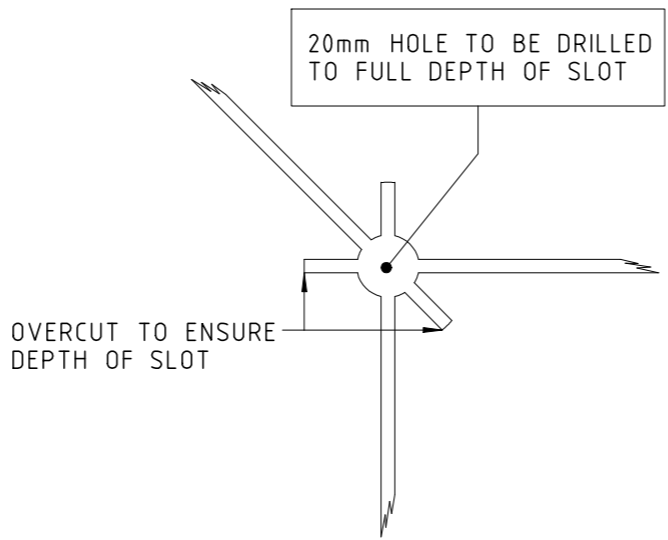
**TYPICAL INSTALLATION
PRESENCE & SEMI - PRESENCE DETECTORS**



SECTION A - A



**SECTION B - B
DETECTOR PIT**



DETAIL 1

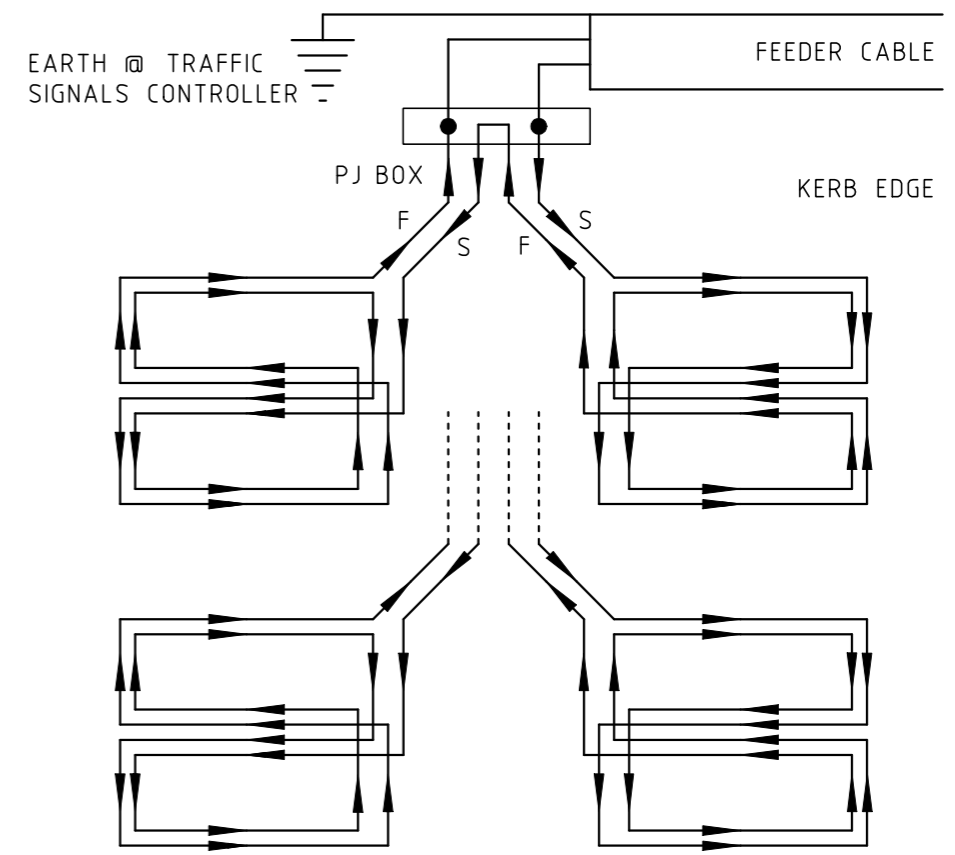
RECOMMENDED BLUNTING OF CORNERS FOR ALL SAWCUT INTERSECTS

NOTES:

1. JOINT AND SWEAT LOOP DETECTOR CABLE AND SCREENED FEED CABLE IN FOOTPATH PITS. SEPARATELY INSULATE EACH JOINT WITH 6.3m PD CAP (RAYCHEM), HEATED TO SHRINK. DRILL CLEARANCE HOLE FOR PVC CONDUIT THROUGH CENTRE OF KERB AND GUTTER INTO DETECTOR PIT.
2. EACH DETECTOR TO BE CONTROLLED BY INDIVIDUAL SENSOR UNIT.
3. LOOP WIRE COLOURS ARE:- (i) LANE NEAREST DETECTOR PIT - BLUE (ii) LANE 2ND FROM DETECTOR PIT - YELLOW (iii) LANE 3RD FROM DETECTOR PIT - RED (iv) LANE 4TH FROM DETECTOR PIT - BLACK
ALL ADDITIONAL DETECTORS WILL BE SUITABLY TAGGED AND DESIGNATED.
4. WHERE TWO DETECTORS ARE USED FOR RIGHT TURN FACILITY, THE DETECTORS WILL BE CONNECTED SEPARATELY.
5. THE TYPICAL INSTALLATION SHOWS TWO 4.5m DETECTORS. ANY ADDITIONAL DETECTORS ARE TO BE POSITIONED 0.6m FROM EITHER LANE LINE (IE. 1.2m APART)
6. AVOID KNOWN ROAD OPENINGS SUCH AS TRENCHES WHEN POSITIONING LOOPS. ADJUST LOOP POSITION IN CONSULTATION WITH SUPERINTENDENT.
7. LOOP DETECTOR CABLE IS TO BE V90HT30/0.25

LOOP NOTES:

- DIRECTION OF WINDING IS AS INDICATED. HELAGRIP CABLE MARKER (HG 3 AVAILABLE FROM HAWTHORPE AUST. PTY. LTD.) OR EQUIVALENT TO BE USED TO LABEL :-
- (i) START (S) & FINISH (F) OF LOOP WIRES (VIZ, 1S, 1F, 2S OR 2F) AT LEAD ENDS IN PAVEMENT JUNCTION BOX. REFER ALSO NOTE 3 FOR COLOURS.
 - (ii) EACH END OF TWIN SCREENED FEEDER CABLES TO SHOW DETECTOR NUMBER AS PER DESIGN PLAN.



TYPICAL LAYOUT

LOOP CONNECTIONS FOR PRESENCE DETECTORS

16/03/2010 11:09:35 AM X:\CIVIL STANDARD DRAWINGS\6 TRAFFIC\6 - CS1500 SERIES STANDARDS\CS1507-5.dwg

| No. | DESCRIPTION | DATE | INIT. |
|-----|--|--------|-------|
| 1. | LOOP CONNECTORS FOR PRESENCE DETECTORS AND DETAIL 1 ADDED. | 9/95 | K.S. |
| 2. | NOTE 7 ADDED. | 9/97 | A.D. |
| 3. | LOOP CONNECTOR DETAIL PJ BOX ALTERED. | 2/99 | K.S. |
| 4. | GOVERNMENT DEPARTMENT LOGOS CHANGED. | 5/2002 | K.S. |
| 5. | GOVERNMENT DEPARTMENT LOGOS CHANGED. | 3/2010 | W.L. |

WARNING
BEWARE OF UNDERGROUND SERVICES
The locations of underground services are approximate only and their exact position should be proven on site. No guarantee is given that all existing services are shown.

| | |
|---|-----------------|
| DRAWN K. SCHULZE | CHECKED |
| DATE 1-9-1992 | DATE |
| DESIGNED | CHECKED |
| DATE | DATE |
| DESIGN PROJECT LEADER William Mookie | PROJECT OFFICER |
| DATE 29 MAY 2002 | DATE |

Northern Territory Government
Department of Construction and Infrastructure

| | | | | | | | |
|--|--|----------|-----------|---------------------|-------------------------|--------|------------------|
| STANDARD DRAWING SIGNAL DETAILS DETECTOR INSTALLATION | | FILE No. | ASSET No. | SHEET No. 1 OF 1 | DRAWING No. CS1507-5 | AMEND. | SHEET SIZE A3 |
|--|--|----------|-----------|---------------------|-------------------------|--------|------------------|